

## General Information

### Protein Construction

A DNA sequence encoding the canine CXCL12 (NP\_001121569.1) (Lys22-Met93) was expressed with a N-terminal Met.

### Organism

Canine

### Expression Host

E. coli

## QC Testing

### Purity

> 95 % as determined by SDS-PAGE

### Endotoxin

Please contact us for more information.

### Stability

Samples are stable for up to twelve months from date of receipt at -70°C

### Predicted N terminal

Met

### Molecular Mass

The recombinant canine CXCL12 comprises 73 amino acids and has a predicted molecular mass

of 8.6 kDa.

### Formulation

Lyophilized from sterile 50 mM Tris, 500 mM NaCl, pH 8.0.

1. 5 % trehalose and mannitol are added as protectants before lyophilization.
2. Please contact us for any concerns or special requirements.

## Usage Guide

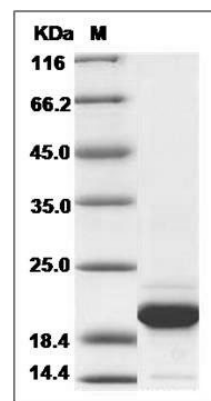
### Storage

Store it under sterile conditions at -20°C to -80°C. It is recommended that the protein be aliquoted for optimal storage. Avoid repeated freeze-thaw cycles.

### Reconstitution

Adding sterile water, prepare a stock solution of 0.25 mg/ml. Concentration is measured by UV-Vis.

### SDS-PAGE



Canine CXCL12 / SDF-1 Protein SDS-PAGE