

# ASF1B antibody

Catalog Number: 108225

## Product name

ASF1B antibody

## Specificity

Human, Mouse, Rat; other species not tested.

## Antibody description

ASF1B Rabbit Polyclonal antibody. Positive WB detected in HeLa cells, mouse thymus tissue. Positive IHC detected in human lymphoma tissue. Observed molecular weight by Western-blot: 22 kDa

## Preparation

This antibody was obtained by immunization of ASF1B recombinant protein (Accession Number: NM\_018154). Purification method: Antigen affinity purified.

## Formulation

PBS with 0.1% sodium azide and 50% glycerol pH 7.3.

## Storage

Store at -20°C. DO NOT ALIQUOT

## Clonality

Polyclonal

## Ig Type

Rabbit IgG

## Applications

ELISA, IHC, WB

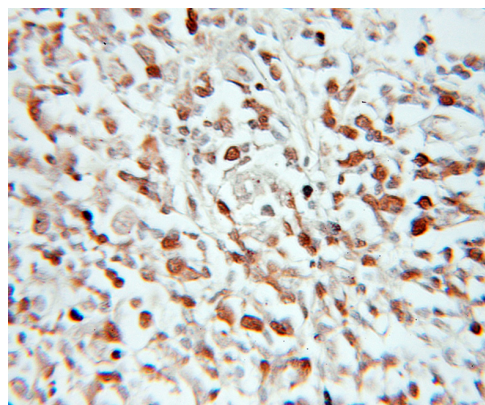
## Dilutions

Recommended Dilution:

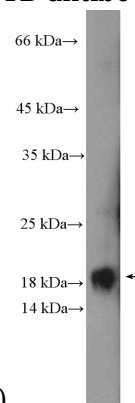
WB: 1:200-1:1000

IHC: 1:20-1:200

## Validations



Immunohistochemical of paraffin-embedded human lymphoma using Catalog No:108225(ASF1B antibody) at dilution of 1:100



(under 10x lens)

HeLa cells were subjected to SDS PAGE followed by western blot with Catalog No:108225(ASF1B Antibody) at dilution of 1:300