

Cyclophilin B antibody



Catalog Number: 107225

Product name

Cyclophilin B antibody

Specificity

Human; other species not tested.

Antibody description

Cyclophilin B Mouse Monoclonal antibody.
Positive IHC detected in human pancreas cancer.
Positive WB detected in HeLa cells, HepG2 cells,
U-937 cells. Observed molecular weight by
Western-blot: 24kD

Preparation

This antibody was obtained by immunization of
Cyclophilin B recombinant protein (Accession
Number: NM_000942). Purification method:
Protein A purified.

Formulation

PBS with 0.02% sodium azide and 50% glycerol
pH 7.3.

Storage

Store at -20°C. DO NOT ALIQUOT

Clonality

Monoclonal

Ig Type

Mouse IgG2a

Applications

ELISA, WB, IHC

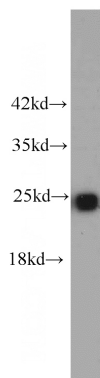
Dilutions

Recommended Dilution:

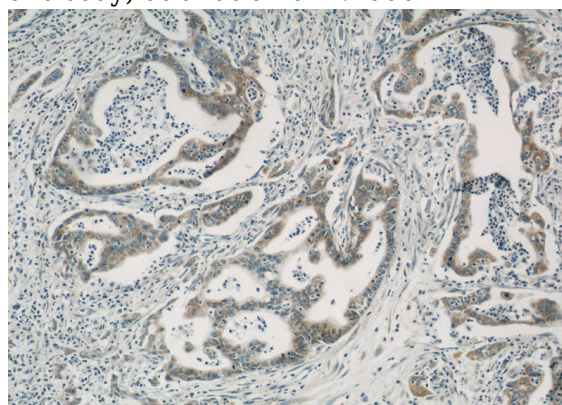
WB: 1:500-1:5000

IHC: 1:20-1:200

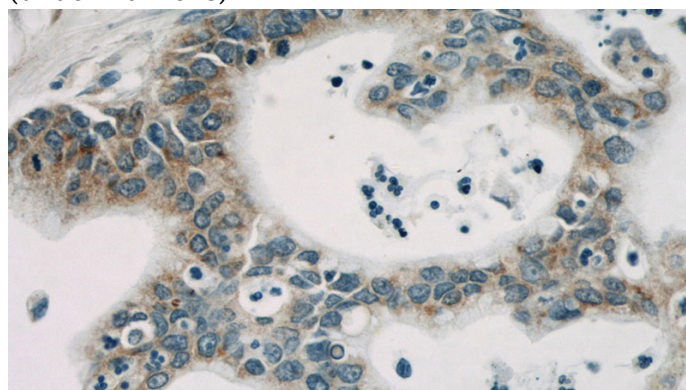
Validations



HeLa cells were subjected to SDS PAGE followed
by western blot with Catalog No:107225(PPIB
antibody) at dilution of 1:1000



Immunohistochemical of paraffin-embedded
human pancreas cancer using Catalog
No:107225(PPIB antibody) at dilution of 1:50
(under 10x lens)



Immunohistochemical of paraffin-embedded
human pancreas cancer using Catalog
No:107225(PPIB antibody) at dilution of 1:50

Cyclophilin B antibody



Catalog Number: 107225

(under 40x lens)