

NPTX2 antibody

Catalog Number: 113225

Product name

NPTX2 antibody

IP: 1:200-1:2000

IHC: 1:20-1:200

Specificity

Human, Mouse, Rat; other species not tested.

Antibody description

NPTX2 Rabbit Polyclonal antibody. Positive IHC detected in human pancreas cancer tissue. Positive WB detected in mouse brain tissue, PC-3 cells, SH-SY5Y cells. Positive IP detected in mouse brain tissue. Observed molecular weight by Western-blot: 47 kDa

Preparation

This antibody was obtained by immunization of NPTX2 recombinant protein (Accession Number: NM_002523). Purification method: Antigen affinity purified.

Formulation

PBS with 0.1% sodium azide and 50% glycerol pH 7.3.

Storage

Store at -20°C. DO NOT ALIQUOT

Clonality

Polyclonal

Ig Type

Rabbit IgG

Applications

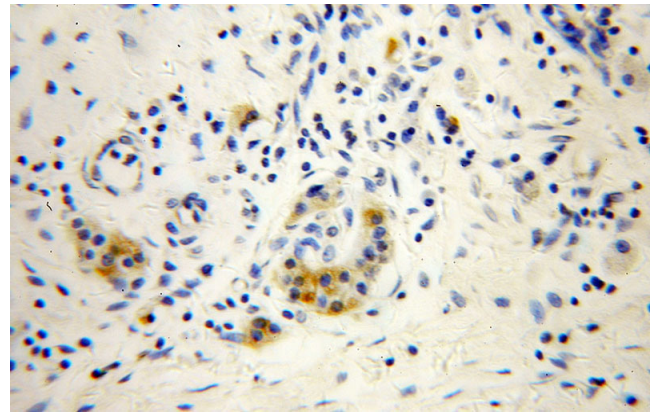
ELISA, IHC, WB, IP

Dilutions

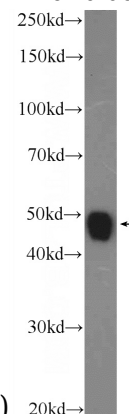
Recommended Dilution:

WB: 1:200-1:2000

Validations

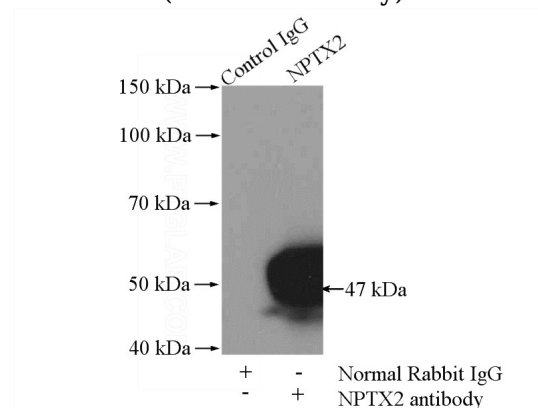


Immunohistochemical of paraffin-embedded human pancreas cancer using Catalog No:113225(NPTX2 antibody) at dilution of 1:100



(under 40x lens)

mouse brain tissue were subjected to SDS PAGE followed by western blot with Catalog No:113225(NPTX2 Antibody) at dilution of 1:600



IP Result of anti-NPTX2 (IP:Catalog No:113225,

NPTX2 antibody



Catalog Number: 113225

4ug; Detection:Catalog No:113225 1:600) with mouse brain tissue lysate 4000ug.