

LILRA5 antibody



Catalog Number: 112225

Product name

LILRA5 antibody

Specificity

Human; other species not tested.

Antibody description

LILRA5 Rabbit Polyclonal antibody. Positive WB detected in K-562 cells. Positive FC detected in K-562 cells. Observed molecular weight by Western-blot: 31-33kd

Preparation

This antibody was obtained by immunization of Peptide (Accession Number: NM_181986). Purification method: Antigen affinity purified.

Formulation

PBS with 0.02% sodium azide and 50% glycerol pH 7.3.

Storage

Store at -20°C. DO NOT ALIQUOT

Clonality

Polyclonal

Ig Type

Rabbit IgG

Applications

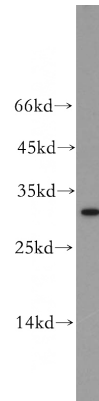
ELISA, WB, FC

Dilutions

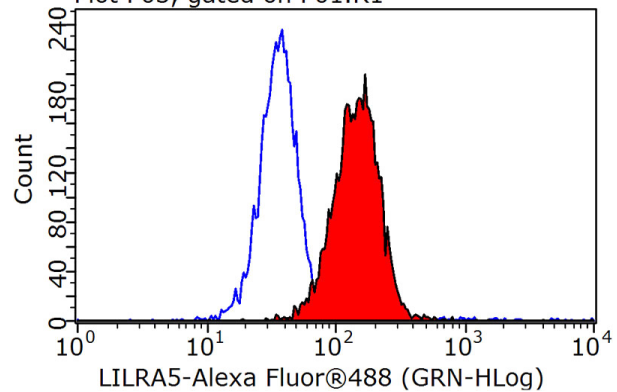
Recommended Dilution:

WB: 1:500-1:5000

Validations



K-562 cells were subjected to SDS PAGE followed by western blot with Catalog No:112225(LILRA5 antibody) at dilution of 1:500
Plot P03, gated on P01.R1



1X10⁶ K-562 cells were stained with 0.2ug LILRA5 antibody (Catalog No:112225, red) and control antibody (blue). Fixed with 90% MeOH blocked with 3% BSA (30 min). Alexa Fluor 488-conjugated AffiniPure Goat Anti-Rabbit IgG(H+L) with dilution 1:1000.