

General Information

Protein Construction

A DNA sequence encoding the envelope protein of West Nile Virus (WNV) (lineage 2, strain Nea Santa-Greece-2010) (AED99787.1) (Gln586-Ile694) was expressed with a polyhistidine tag at the C-terminus.

Organism

WNV

Expression Host

Yeast

QC Testing

Purity

> 95 % as determined by SDS-PAGE.

Endotoxin

Please contact us for more information.

Stability

Samples are stable for up to twelve months from date of receipt at -70°C

Predicted N terminal

Gln 586

Molecular Mass

The recombinant envelope protein of West Nile Virus (WNV) (lineage 2, strain Nea Santa-Greece-2010) consists of 130 amino acids and predicts a molecular mass of 14 kDa.

Formulation

Lyophilized from sterile PBS, pH 7.4.

1. Normally 5 % - 8 % trehalose, mannitol and

0.01% Tween80 are added as protectants before lyophilization. Specific concentrations are included in the hardcopy of COA.

2. Please contact us for any concerns or special requirements.

Usage Guide

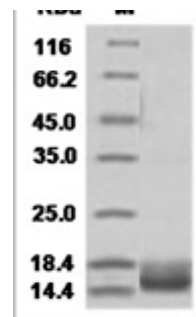
Storage

Store it under sterile conditions at -20°C to -80°C. It is recommended that the protein be aliquoted for optimal storage. Avoid repeated freeze-thaw cycles.

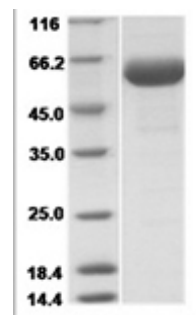
Reconstitution

A hardcopy of COA with reconstitution instruction is sent along with the products. Please refer to it for detailed information.

SDS-PAGE



Human WNV-E / Envelope protein Protein 15522



West Nile Virus (WNV) (lineage 2, strain Nea Santa-Greece-2010) E / Envelope Protein (Domain III, His Tag)