

RRM2 antibody

Catalog Number: 114925

Product name

RRM2 antibody

IP: 1:200-1:2000

IHC: 1:20-1:200

Specificity

Human, Mouse, Rat; other species not tested.

Antibody description

RRM2 Rabbit Polyclonal antibody. Positive WB detected in K-562 cells, A431 cells, HeLa cells. Positive IP detected in K-562 cells. Positive IHC detected in human tonsillitis tissue. Observed molecular weight by Western-blot: 45kd

Preparation

This antibody was obtained by immunization of RRM2 recombinant protein (Accession Number: NM_001034). Purification method: Antigen affinity purified.

Formulation

PBS with 0.02% sodium azide and 50% glycerol pH 7.3.

Storage

Store at -20°C. DO NOT ALIQUOT

Clonality

Polyclonal

Ig Type

Rabbit IgG

Applications

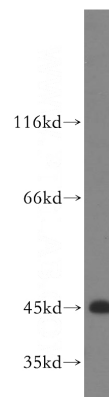
ELISA, WB, IHC, IP

Dilutions

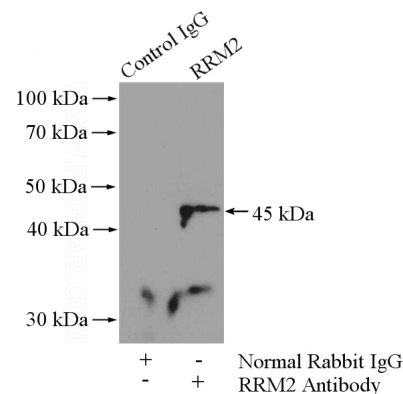
Recommended Dilution:

WB: 1:200-1:2000

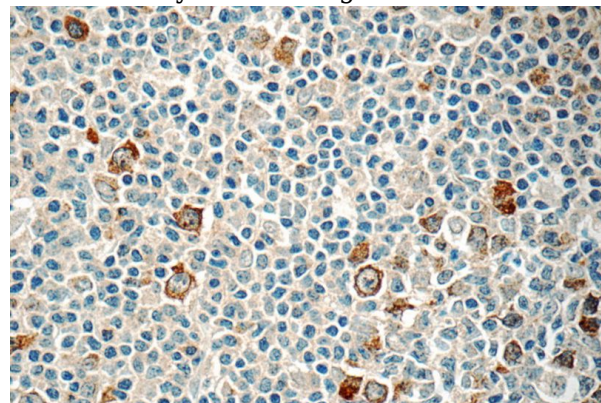
Validations



K-562 cells were subjected to SDS PAGE followed by western blot with Catalog No:114925(RRM2 antibody) at dilution of 1:200



IP Result of anti-RRM2 (IP:Catalog No:114925, 4ug; Detection:Catalog No:114925 1:500) with K-562 cells lysate 1200ug.



Immunohistochemistry of paraffin-embedded human tonsillitis tissue slide using Catalog

RRM2 antibody



Catalog Number: 114925

No:114925(RRM2 Antibody) at dilution of 1:50 (under 40x lens)