

Anti-CXCL1 antibody



Catalog Number: 104925

Product name

Anti-CXCL1 antibody

Specificity

Human CXCL1

Antibody description

Rabbit polyclonal to CXCL1

Preparation

Produced in rabbits immunized with a synthetic peptide corresponding to the center region of the Human CXCL1, and purified by antigen affinity chromatography.

Formulation

0.2 µm filtered solution in PBS

Storage

This antibody can be stored at 2°C-8°C for one month without detectable loss of activity. Antibody products are stable for twelve months from date of receipt when stored at -20°C to -80°C.

Preservative-Free.

Sodium azide is recommended to avoid contamination (final concentration 0.05%-0.1%). It is toxic to cells and should be disposed of properly. Avoid repeated freeze-thaw cycles.

Clonality

Polyclonal

Ig Type

Rabbit IgG

Applications

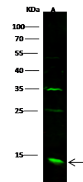
WB, IP

Dilutions

WB: 10-20 µg/ml

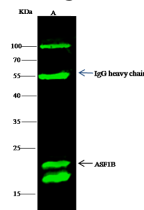
IP: 0.5-2 uL/mg of lysate

Validations



Items	Lanes	A
Sample (whole cell lysate)		Jurkat
Sample Volume (µg/lane)		30
Gel		13% SDS-PAGE reducing gel
Recommended Concentration		10-20 µg/ml
Secondary Antibody		Dylight 800 labeled Antibody to Rabbit IgG (H+L), at 1:5000 dilution.
Explanation		Developed using Odyssey imaging system. Predicted band size: 33 kDa Observed band size: 33 kDa Additional bands at: 35 kDa and 25 kDa (We are unsure as to the identity of these extra bands. They are possible non-specific bindings).

CXCL1 Antibody, Rabbit PAb, Antigen Affinity



Items	Lanes	A
Sample (whole cell lysate)		K562
Sample quantity		0.5 mg
IP antibody quantity		2 µg
Immuno magnetic beads Protein G		60 µg
Gel		13% SDS-PAGE reducing gel
Primary antibody		ASP1B antibody at 10 µg/ml
Secondary antibody		Dylight 800-labeled antibody to rabbit IgG (H+L), at 1:5000 dilution

Purified, Western blot

CXCL1 Antibody, Rabbit PAb, Antigen Affinity

Purified, Immunoprecipitation