

PLA2G4B antibody



Catalog Number: 113925

Product name

PLA2G4B antibody

Specificity

Human; other species not tested.

Antibody description

PLA2G4B Rabbit Polyclonal antibody. Positive WB detected in human plasma tissue. Positive IHC detected in human gliomas tissue. Observed molecular weight by Western-blot: ~88 kDa

Preparation

This antibody was obtained by immunization of Peptide (Accession Number: NM_001114633). Purification method: Antigen affinity purified.

Formulation

0.1M NaHCO₃, 0.1M glycine, 0.02% sodium azide and 50% glycerol pH 7.3.

Storage

Store at -20°C. DO NOT ALIQUOT

Clonality

Polyclonal

Ig Type

Rabbit IgG

Applications

ELISA, IHC, WB

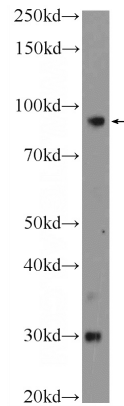
Dilutions

Recommended Dilution:

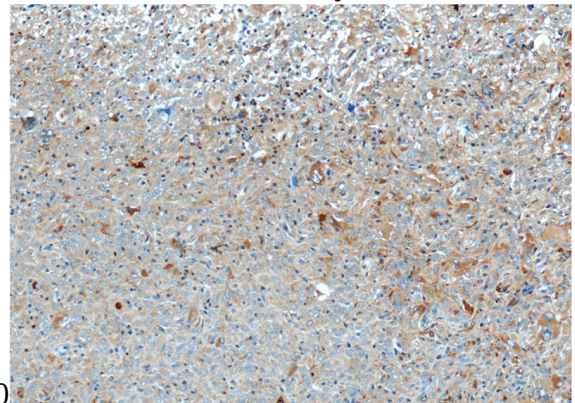
WB: 1:200-1:1000

IHC: 1:20-1:200

Validations

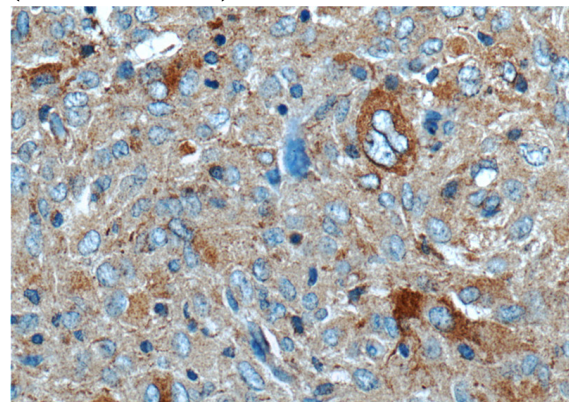


human plasma tissue were subjected to SDS PAGE followed by western blot with Catalog No:113925(PLA2G4B Antibody) at dilution of



1:300

Immunohistochemistry of paraffin-embedded human gliomas tissue slide using Catalog No:113925(PLA2G4B Antibody) at dilution of 1:50 (under 10x lens)



Immunohistochemistry of paraffin-embedded human gliomas tissue slide using Catalog No:113925(PLA2G4B Antibody) at dilution of 1:50 (under 40x lens)