

# GDI1 antibody

Catalog Number: 110925

## Product name

GDI1 antibody

WB: 1:500-1:5000

IP: 1:200-1:2000

## Specificity

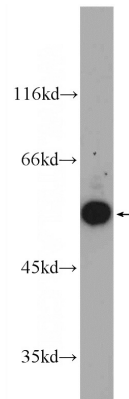
Human, Mouse, Rat; other species not tested.

IHC: 1:20-1:200

## Antibody description

GDI1 Rabbit Polyclonal antibody. Positive IP detected in mouse brain tissue. Positive WB detected in mouse brain tissue, human brain tissue. Positive IHC detected in human brain tissue, human kidney tissue, human spleen tissue, human testis tissue. Observed molecular weight by Western-blot: 55 kDa

## Validations



## Preparation

This antibody was obtained by immunization of GDI1 recombinant protein (Accession Number: NM\_001493). Purification method: Antigen affinity purified.

mouse brain tissue were subjected to SDS PAGE followed by western blot with Catalog No:110925(GDI1 Antibody) at dilution of 1:1000

## Formulation

PBS with 0.1% sodium azide and 50% glycerol pH 7.3.

## Storage

Store at -20°C. DO NOT ALIQUOT

## Clonality

Polyclonal

## Ig Type

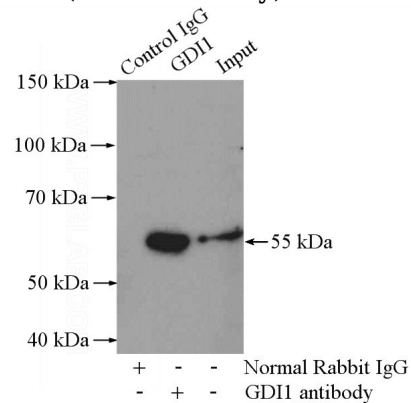
Rabbit IgG

## Applications

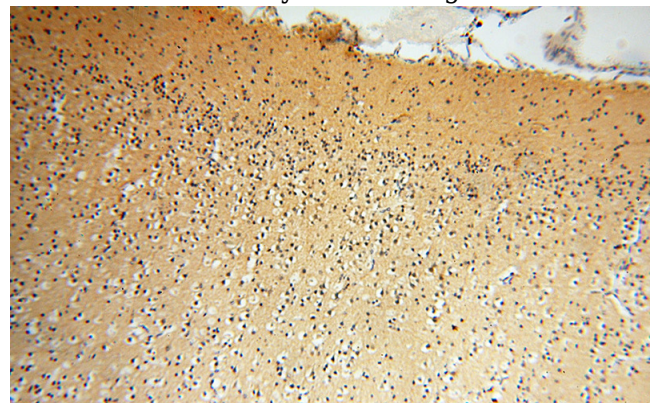
ELISA, IHC, WB, IP

## Dilutions

Recommended Dilution:



IP Result of anti-GDI1 (IP:Catalog No:110925, 4ug; Detection:Catalog No:110925 1:800) with mouse brain tissue lysate 4000ug.

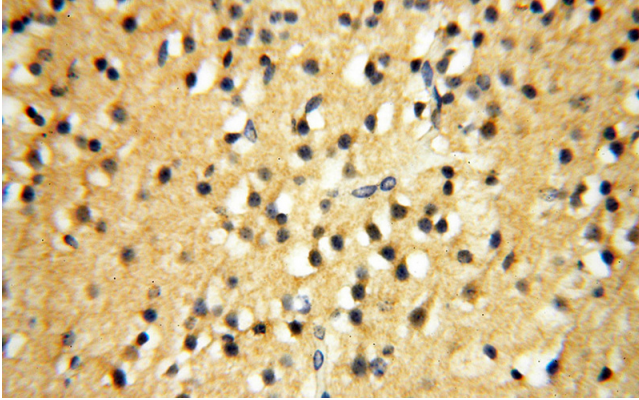


# GDI1 antibody

Catalog Number: 110925

---

Immunohistochemical of paraffin-embedded human brain using Catalog No:110925(GDI1 antibody) at dilution of 1:50 (under 10x lens)



Immunohistochemical of paraffin-embedded human brain using Catalog No:110925(GDI1 antibody) at dilution of 1:50 (under 40x lens)