

CPSF2 antibody

Catalog Number: 109525

Product name

CPSF2 antibody

WB: 1:1000-1:10000

IP: 1:500-1:5000

Specificity

Human, Mouse, Rat; other species not tested.

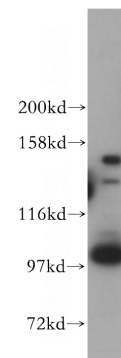
IHC: 1:20-1:200

IF: 1:20-1:200

Antibody description

CPSF2 Rabbit Polyclonal antibody. Positive IHC detected in human brain tissue. Positive IF detected in HepG2 cells. Positive WB detected in HeLa cells, human brain tissue, mouse brain tissue. Positive IP detected in HeLa cells. Observed molecular weight by Western-blot: 100 kDa

Validations



Preparation

This antibody was obtained by immunization of CPSF2 recombinant protein (Accession Number: NM_001322272). Purification method: Antigen affinity purified.

HeLa cells were subjected to SDS PAGE followed by western blot with Catalog No:109525(CPSF2 antibody) at dilution of 1:800

Formulation

PBS with 0.02% sodium azide and 50% glycerol pH 7.3.

Storage

Store at -20°C. DO NOT ALIQUOT

Clonality

Polyclonal

Ig Type

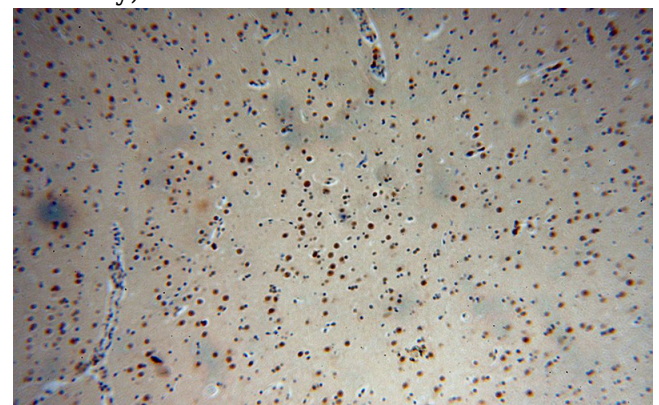
Rabbit IgG

Applications

ELISA, WB, IHC, IF, IP

Dilutions

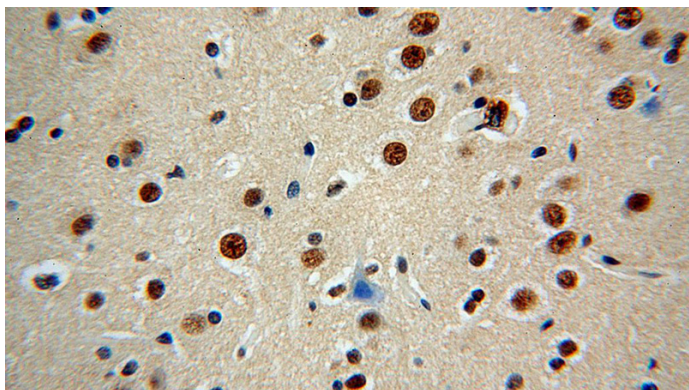
Recommended Dilution:



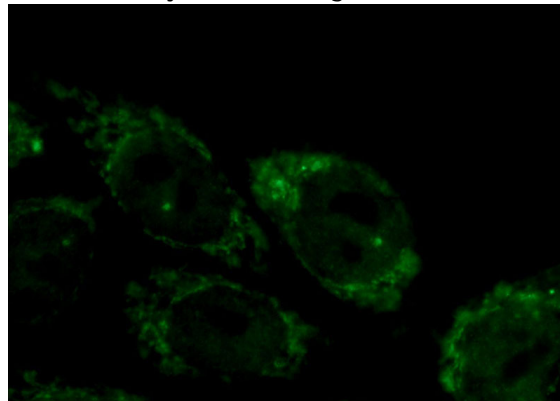
Immunohistochemical of paraffin-embedded human brain using Catalog No:109525(CPSF2 antibody) at dilution of 1:100 (under 10x lens)

CPSF2 antibody

Catalog Number: 109525



IP Result of anti-CPSF2 (IP:Catalog No:109525, 4ug; Detection:Catalog No:109525 1:1000) with HeLa cells lysate 4000ug.



Immunohistochemical of paraffin-embedded human brain using Catalog No:109525(CPSF2 antibody) at dilution of 1:100 (under 40x lens)

Immunofluorescent analysis of HepG2 cells using Catalog No:109525(CPSF2 Antibody) at dilution of 1:50 and Alexa Fluor 488-conjugated AffiniPure Goat Anti-Rabbit IgG(H+L)

