

Anti-H2BC12 antibody



Catalog Number: 176525

Product name

Anti-H2BC12 antibody

Specificity

Human, Mouse, Rat

Antibody description

Rabbit monoclonal antibody to H2BC12

Preparation

This antigen of this antibody was recombinant protein

Formulation

Liquid, 1*TBS (pH7.4), 0.05% BSA, 40% Glycerol.
Preservative: 0.05% Sodium Azide.

Storage

Store at +4°C after thawing. Aliquot store at -20°C or -80°C. Avoid repeated freeze / thaw cycles.

Clonality

Monoclonal

Ig Type

Rabbit IgG

Applications

WB, ICC/IF, IHC-P, IP, FC

Dilutions

WB: 1:1,000

ICC/IF: 1:100-1:500

IHC-P: 1:100-1:500

FC: 1:50-1:100

Validations

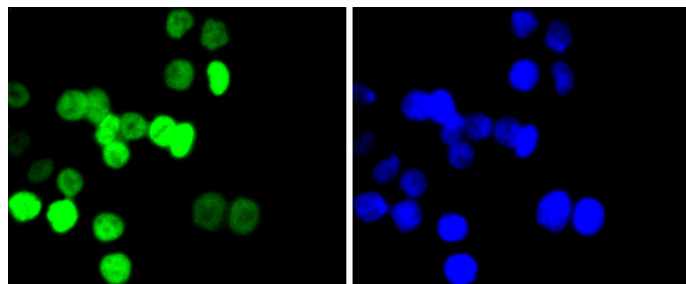


Fig1: ICC staining Histone H2B(acetyl K20) in SW480 cells (green). The nuclear counter stain is DAPI (blue). Cells were fixed in paraformaldehyde, permeabilised with 0.25% Triton X100/PBS.

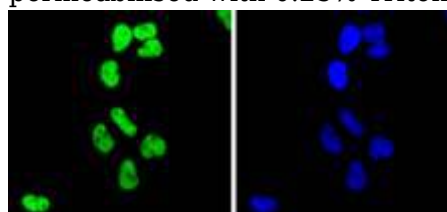


Fig2: ICC staining Histone H2B(acetyl K20) in HeLa cells (green). The nuclear counter stain is DAPI (blue). Cells were fixed in paraformaldehyde, permeabilised with 0.25% Triton X100/PBS.

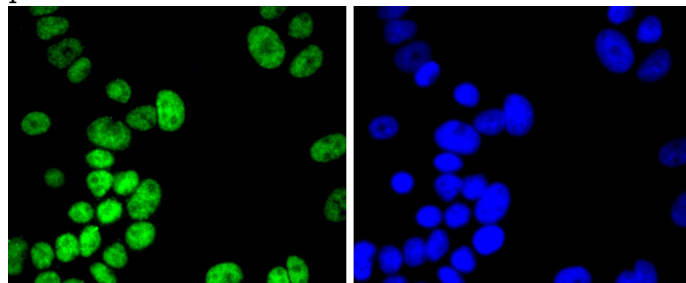


Fig3: ICC staining Histone H2B(acetyl K20) in MCF-7 cells (green). The nuclear counter stain is DAPI (blue). Cells were fixed in paraformaldehyde, permeabilised with 0.25% Triton X100/PBS.

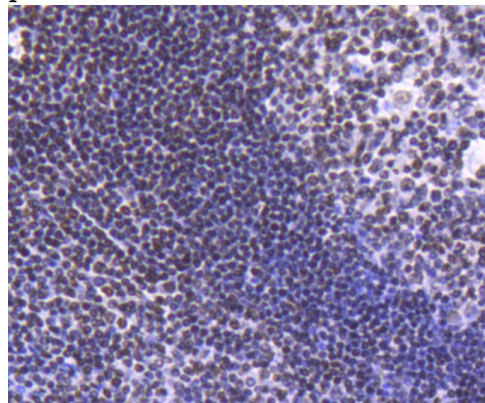
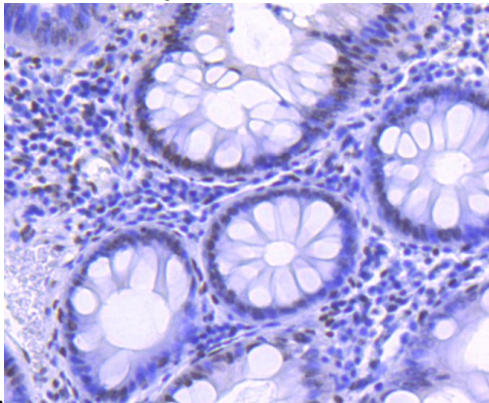


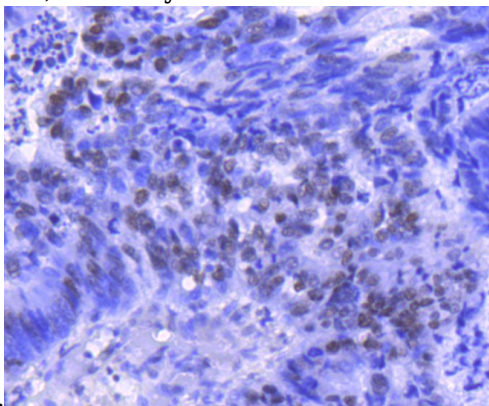
Fig4: Immunohistochemical analysis of paraffin-

embedded human tonsil tissue using anti-Histone H2B(acetyl K20) antibody. Counter stained with



hematoxylin.

Fig5: Immunohistochemical analysis of paraffin-embedded human colon tissue using anti-Histone H2B(acetyl K20) antibody. Counter stained with



hematoxylin.

Fig6: Immunohistochemical analysis of paraffin-embedded human colon cancer tissue using anti-Histone H2B(acetyl K20) antibody. Counter stained with hematoxylin.

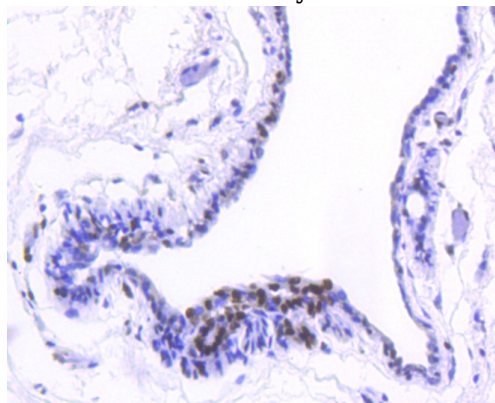


Fig7: Immunohistochemical analysis of paraffin-embedded human breast carcinoma tissue using anti-Histone H2B(acetyl K20) antibody. Counter stained with hematoxylin.

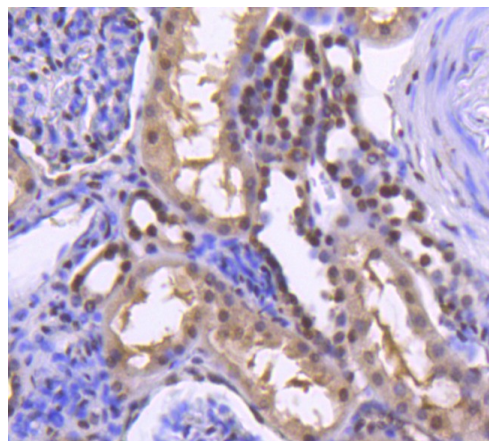
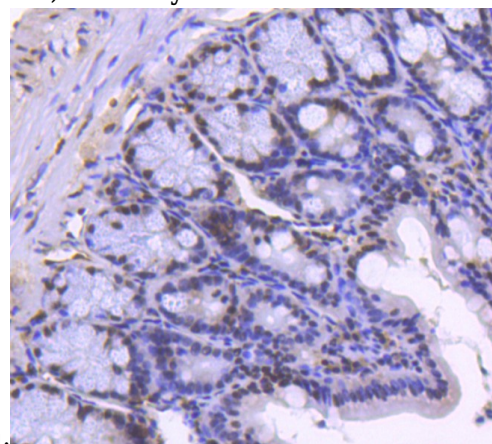
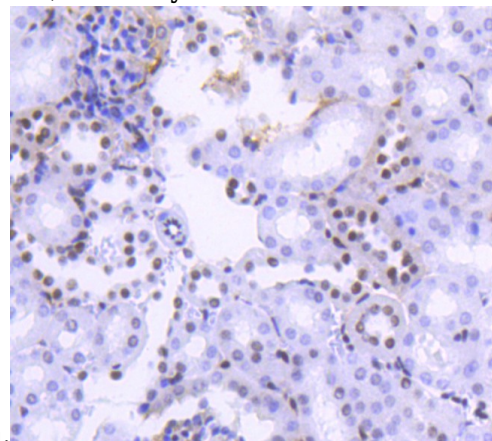


Fig8: Immunohistochemical analysis of paraffin-embedded human kidney tissue using anti-Histone H2B(acetyl K20) antibody. Counter stained with



hematoxylin.

Fig9: Immunohistochemical analysis of paraffin-embedded mouse colon tissue using anti-Histone H2B(acetyl K20) antibody. Counter stained with



hematoxylin.

Fig10: Immunohistochemical analysis of paraffin-embedded mouse kidney tissue using anti-Histone H2B(acetyl K20) antibody. Counter stained with

Anti-H2BC12 antibody

Catalog Number: 176525

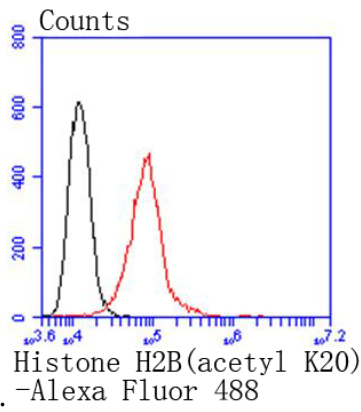


Fig11: Flow cytometric analysis of HeLa cells with Histone H2B(acetyl K20) antibody at 1/50 dilution (red) compared with an unlabelled control (cells without incubation with primary antibody; black). Alexa Fluor 488-conjugated goat anti rabbit IgG was use