

# RAG2 antibody

Catalog Number: 114525

## Product name

RAG2 antibody

WB: 1:200-1:1000

IP: 1:200-1:1000

## Specificity

Human, Mouse; other species not tested.

IHC: 1:20-1:200

IF: 1:10-1:100

## Antibody description

RAG2 Rabbit Polyclonal antibody. Positive WB detected in A375 cells, mouse thymus tissue. Positive IP detected in A375 cells. Positive IHC detected in human lymphoma tissue. Positive IF detected in HeLa cells. Positive FC detected in HeLa cells. Observed molecular weight by Western-blot: 57-62 kDa

## Preparation

This antibody was obtained by immunization of RAG2 recombinant protein (Accession Number: NM\_001243785). Purification method: Antigen affinity purified.

## Formulation

PBS with 0.1% sodium azide and 50% glycerol pH 7.3.

## Storage

Store at -20°C. DO NOT ALIQUOT

## Clonality

Polyclonal

## Ig Type

Rabbit IgG

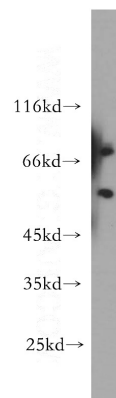
## Applications

ELISA, WB, IHC, IF, FC, IP

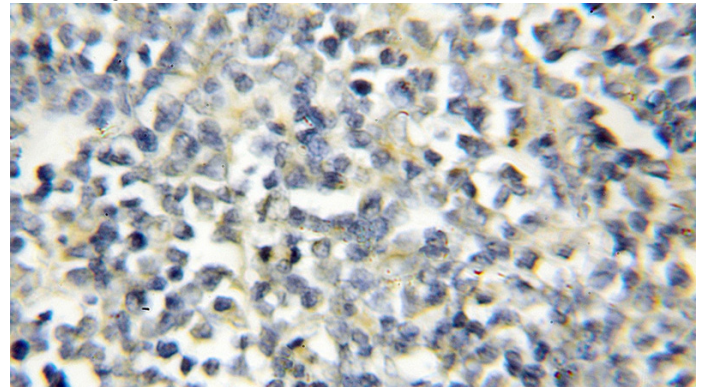
## Dilutions

Recommended Dilution:

## Validations



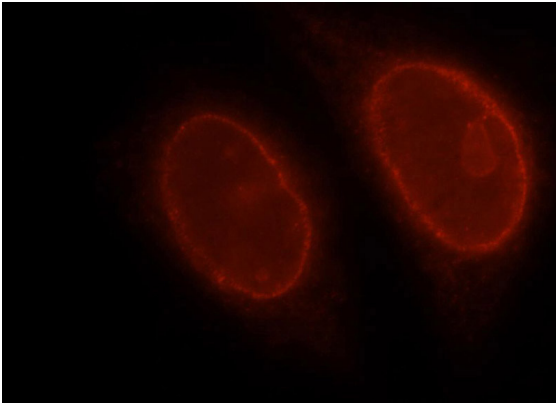
A375 cells were subjected to SDS PAGE followed by western blot with Catalog No:114525(RAG2 antibody) at dilution of 1:300



Immunohistochemical of paraffin-embedded human lymphoma using Catalog No:114525(RAG2 antibody) at dilution of 1:50 (under 10x lens)

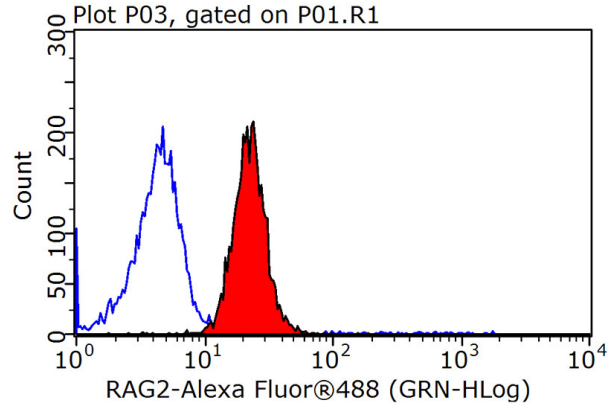
# RAG2 antibody

Catalog Number: 114525



Immunofluorescent analysis of HeLa cells, using RAG2 antibody Catalog No:114525 at 1:25 dilution and Rhodamine-labeled goat anti-rabbit IgG (red).

IP Result of anti-RAG2 (IP:Catalog No:114525, 4ug; Detection:Catalog No:114525 1:300) with A375 cells lysate 3600ug.



1X10<sup>6</sup> HeLa cells were stained with 0.2ug RAG2 antibody (Catalog No:114525, red) and control antibody (blue). Fixed with 90% MeOH blocked with 3% BSA (30 min). Alexa Fluor 488-conjugated AffiniPure Goat Anti-Rabbit IgG(H+L) with dilution 1:1000.

