

## General Information

### Protein Construction

A DNA sequence encoding the rhesus BTLA (EHH16054.1) (Met1-Leu155) was expressed with the Fc region of human IgG1 at the C-terminus.

### Organism

Rhesus

### Expression Host

Human Cells

## QC Testing

### Activity

Immobilized cynoBTLA-Fc at 10 µg/ml (100 µl/well) can bind biotinylated cynoTNFRSF14-Fc (Cat:504769), EC<sub>50</sub> of biotinylated cynoTNFRSF14-Fc (Cat:504769) is 0.7-1.64 µg/ml.

### Purity

> 90 % as determined by SDS-PAGE

### Endotoxin

< 1.0 EU per µg of the protein as determined by the LAL method

### Stability

Samples are stable for up to twelve months from date of receipt at -70°C

### Predicted N terminal

Lys 31

## Molecular Mass

The recombinant rhesus BTLA comprises 366 amino acids and has a calculated molecular mass of 41.4 KDa.

### Formulation

Lyophilized from sterile PBS, pH 7.4.

1. 5 % trehalose and mannitol are added as protectants before lyophilization.

2. Please contact us for any concerns or special requirements.

## Usage Guide

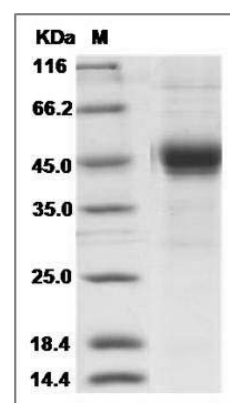
### Storage

Store it under sterile conditions at -20°C to -80°C. It is recommended that the protein be aliquoted for optimal storage. Avoid repeated freeze-thaw cycles.

### Reconstitution

Adding sterile water, prepare a stock solution of 0.25 mg/ml. Concentration is measured by UV-Vis.

## SDS-PAGE



Cynomolgus BTLA Protein (Fc Tag) SDS-PAGE