

# Anti-HA antibody



Catalog Number: 101525

## Product name

Anti-HA antibody

## Immunogen

[H6N1 HA \(His Tag\) recombinant protein](#)

## Specificity

Influenza A H6N1 (A/northern shoveler/California/HKWF115/2007) Hemagglutinin / HA

## Antibody description

Rabbit polyclonal to HA

## Preparation

Produced in rabbits immunized with purified, recombinant Influenza A H6N1 (A/northern shoveler/California/HKWF115/2007) Hemagglutinin / HA (rh Influenza A H6N1 (A/northern shoveler/California/HKWF115/2007) Hemagglutinin / HA ; ACE81692.1; Met1-Gln529). Influenza A H6N1 (A/northern shoveler/California/HKWF115/2007) Hemagglutinin / HA specific IgG was purified by Influenza A H6N1 (A/northern shoveler/California/HKWF115/2007) Hemagglutinin / HA affinity chromatography.

## Formulation

0.2 µm filtered solution in PBS

## Storage

This antibody can be stored at 2°C-8°C for one month without detectable loss of activity. Antibody products are stable for twelve months from date of receipt when stored at -20°C to -80°C.

Preservative-Free.

Sodium azide is recommended to avoid contamination (final concentration 0.05%-0.1%). It

is toxic to cells and should be disposed of properly. Avoid repeated freeze-thaw cycles.

## Clonality

Polyclonal

## Ig Type

Rabbit IgG

## Applications

ELISA, WB, IHC-P, IP

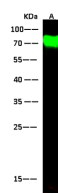
## Dilutions

WB: 2-10 µg/ml

ELISA: 0.1-0.2 µg/mL

This antibody can be used at 0.1-0.2 µg/mL with the appropriate secondary reagents to detect Influenza A H6N1 (A/northern shoveler/California/HKWF115/2007) Hemagglutinin / HA. The detection limit for Influenza A H6N1 (A/northern shoveler/California/HKWF115/2007) Hemagglutinin / HA is < 0.039 ng/well.

## Validations



Items	Lanes	A
Sample (Protein)		H6N1-NC-07-HA-His
Sample Volume (ng/lane)		30
Gel		13% SDS-PAGE reducing gel
Recommended Concentration		2-10 µg/ml
Secondary Antibody		Dylight 800-labeled Antibody To Rabbit Igs (H+L), at 1:5000 dilution.
Explanation		Developed using Odyssey imaging system. Predicted band size : 60 kDa Observed band size : 70 kDa

Influenza A H6N1 (A/northern shoveler/California/HKWF115/2007) Hemagglutinin / HA Antibody, Rabbit PAb, Antigen Affinity Purified, Western blot