

FARSA antibody

Catalog Number: 110525

Product name

FARSA antibody

IHC: 1:20-1:200

IF: 1:10-1:100

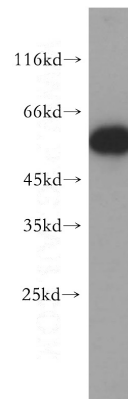
Specificity

Human, Mouse, Rat; other species not tested.

Validations

Antibody description

FARSA Rabbit Polyclonal antibody. Positive WB detected in HepG2 cells, HeLa cells, K-562 cells, MCF7 cells. Positive IF detected in MCF-7 cells, HeLa cells. Positive IHC detected in human kidney tissue. Observed molecular weight by Western-blot: 57 kDa



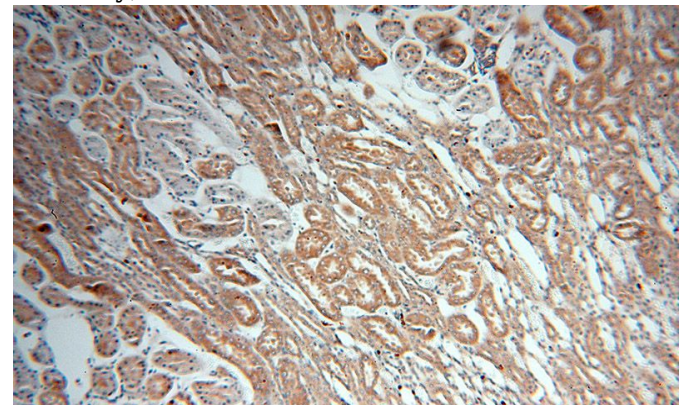
Preparation

This antibody was obtained by immunization of FARSA recombinant protein (Accession Number: NM_004461). Purification method: Antigen affinity purified.

HepG2 cells were subjected to SDS PAGE followed by western blot with Catalog No:110525(FARSA antibody) at dilution of 1:500

Formulation

PBS with 0.02% sodium azide and 50% glycerol pH 7.3.



Storage

Store at -20°C. DO NOT ALIQUOT

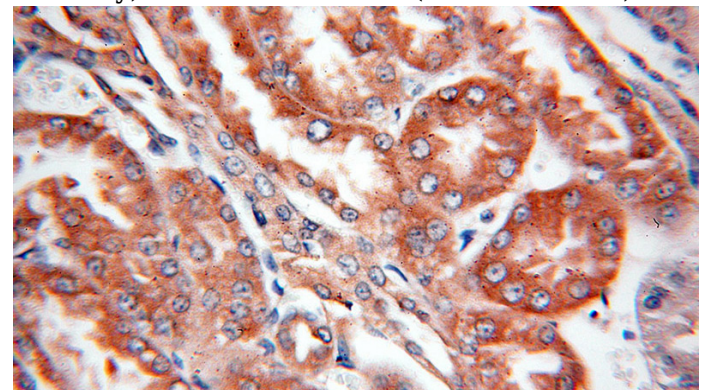
Clonality

Polyclonal

Immunohistochemical of paraffin-embedded human kidney using Catalog No:110525(FARSA antibody) at dilution of 1:100 (under 10x lens)

Ig Type

Rabbit IgG



Applications

ELISA, WB, IHC, IF

Dilutions

Recommended Dilution:

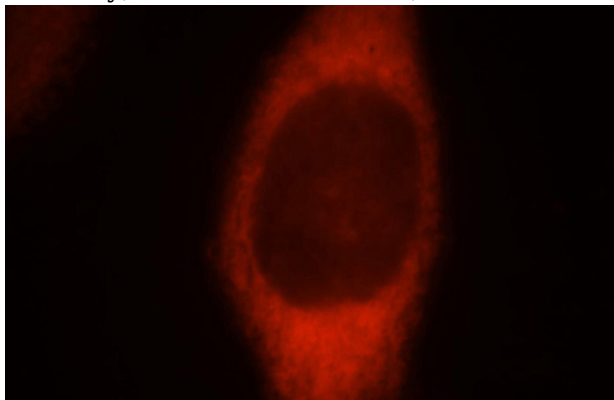
WB: 1:1000-1:10000

Immunohistochemical of paraffin-embedded human kidney using Catalog No:110525(FARSA antibody) at dilution of 1:100 (under 10x lens)

FARSA antibody

Catalog Number: 110525

antibody) at dilution of 1:100 (under 40x lens)



Immunofluorescent analysis of MCF-7 cells, using FARSA antibody Catalog No:110525 at 1:25 dilution and Rhodamine-labeled goat anti-rabbit IgG (red).