

# Human Bcl-W/BCL2L2 (His Tag) recombinant protein



Catalog Number: 500525

## General Information

### Gene Name Synonym

Apoptosis regulator Bcl-W

### Protein Construction

A DNA sequence encoding the human BCL-W (Q92843-1) (Met 1-Thr 172) was fused with a polyhistidine tag at the C-terminus.

### Organism

Human

### Expression Host

E. coli

## QC Testing

### Purity

> 95 % as determined by SDS-PAGE

### Endotoxin

Please contact us for more information.

### Stability

Samples are stable for up to twelve months from date of receipt at -70°C

### Predicted N terminal

Met

### Molecular Mass

The recombinant human BCL-W consisting of 182 amino acids and has a calculated molecular mass

of 20 kDa. It migrates as an approximately 18 kDa band in SDS-PAGE under reducing conditions.

### Formulation

Lyophilized from sterile 25mM Hepes 0.1MKCl 10% glycerol pH 7.5

1. 5 % trehalose and mannitol are added as protectants before lyophilization.

2. Please contact us for any concerns or special requirements.

## Usage Guide

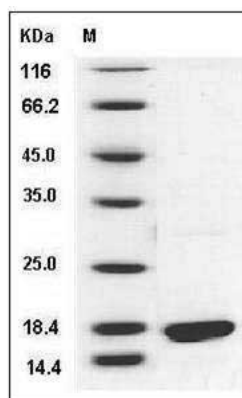
### Storage

Store it under sterile conditions at -20°C to -80°C. It is recommended that the protein be aliquoted for optimal storage. Avoid repeated freeze-thaw cycles.

### Reconstitution

Adding sterile water, prepare a stock solution of 0.25 mg/ml. Concentration is measured by UV-Vis.

## SDS-PAGE



Human BCL-W / BCL2L2 Protein (His Tag) SDS-PAGE