

# Anti-EIF2S1 antibody



Catalog Number: 105125

## Product name

Anti-EIF2S1 antibody

IHC-P: 0.5-2 µg/mL

ICC/IF: 0.5-1.5 µg/mL

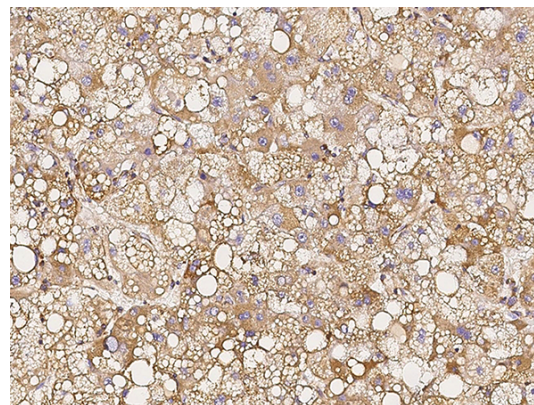
## Specificity

Human EIF2S1

## Validations

## Antibody description

Rabbit polyclonal to EIF2S1



EIF2S1 Antibody, Rabbit PAb, Antigen Affinity Purified, Immunohistochemistry

## Preparation

Produced in rabbits immunized with a synthetic peptide corresponding to the center region of the Human EIF2S1, and purified by antigen affinity chromatography.

Immunochemical staining of human EIF2S1 in human hepatoma with rabbit polyclonal antibody (1 µg/mL, formalin-fixed paraffin embedded

## Formulation

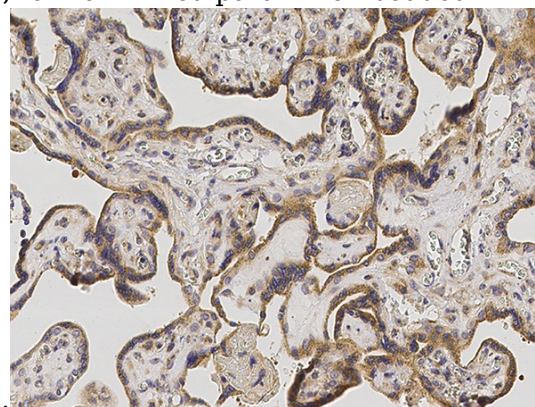
0.2 µm filtered solution in PBS

## Storage

This antibody can be stored at 2°C-8°C for one month without detectable loss of activity. Antibody products are stable for twelve months from date of receipt when stored at -20°C to -80°C.

Preservative-Free.

Sodium azide is recommended to avoid contamination (final concentration 0.05%-0.1%). It is toxic to cells and should be disposed of properly. Avoid repeated freeze-thaw cycles.



sections).

EIF2S1 Antibody, Rabbit PAb, Antigen Affinity Purified, Immunohistochemistry

## Clonality

Polyclonal

## Ig Type

Rabbit IgG

Immunochemical staining of human EIF2S1 in human placenta with rabbit polyclonal antibody (1 µg/mL, formalin-fixed paraffin embedded

## Applications

IHC-P, IF

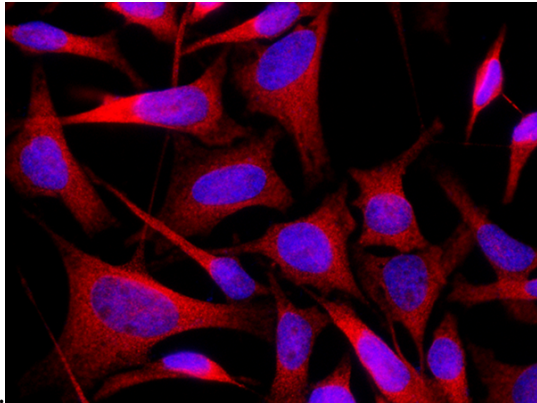
## Dilutions

# Anti-EIF2S1 antibody



Catalog Number: 105125

---



EIF2S1 Antibody, Rabbit PAb, Antigen Affinity Purified, Immunofluorescence

Immunofluorescence staining of EIF2S1 in HeLa cells. Cells were fixed with 4% PFA, blocked with 10% serum, and incubated with rabbit anti-human EIF2S1 polyclonal antibody (1  $\mu\text{g}/\text{mL}$ ) at 4°C overnight. Then cells were stained with the Alexa Fluor®594-conjugate

sections).