

# PPIG antibody

Catalog Number: 114125

## Product name

PPIG antibody

IHC: 1:20-1:200

IF: 1:10-1:100

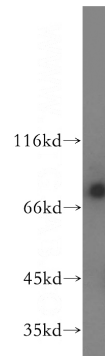
## Specificity

human, mouse, rat; other species not tested.

## Validations

## Antibody description

PPIG Rabbit Polyclonal antibody. Positive WB detected in human liver tissue, Jurkat cells, NIH/3T3 cells, SH-SY5Y cells. Positive IF detected in Hela. Positive IHC detected in human prostate cancer. Observed molecular weight by Western-blot: 89kd



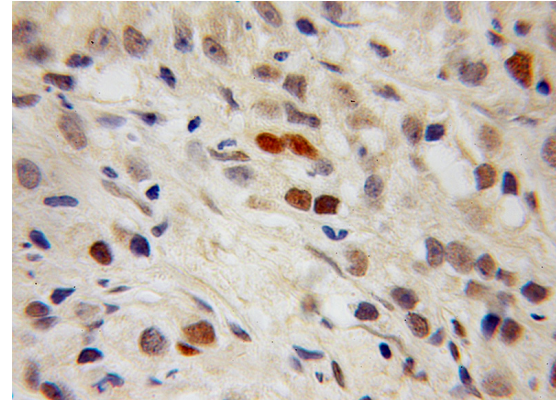
## Preparation

This antibody was obtained by immunization of PPIG recombinant protein (Accession Number: BC001555). Purification method: Antigen affinity purified.

human liver tissue were subjected to SDS PAGE followed by western blot with Catalog No:114125(PPIG antibody) at dilution of 1:400

## Formulation

PBS with 0.02% sodium azide and 50% glycerol pH 7.3.



## Storage

Store at -20°C. DO NOT ALIQUOT

## Clonality

Polyclonal

Immunohistochemical of paraffin-embedded human prostate cancer using Catalog No:114125(PPIG antibody) at dilution of 1:100 (under 10x lens)

## Ig Type

Rabbit IgG

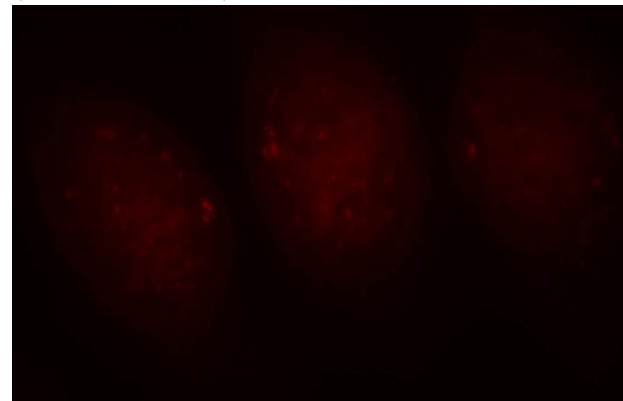
## Applications

ELISA, WB, IHC, IF

## Dilutions

Recommended Dilution:

WB: 1:200-1:2000



Immunofluorescent analysis of Hela cells, using

# PPIG antibody



Catalog Number: 114125

---

PPIG antibody Catalog No:114125 at 1:25 dilution and Rhodamine-labeled goat anti-rabbit IgG (red).