

Whirlin antibody



Catalog Number: 116825

Product name

Whirlin antibody

Specificity

Human; other species not tested.

Antibody description

Whirlin Rabbit Polyclonal antibody. Positive WB detected in COLO 320 cells. Observed molecular weight by Western-blot: 46-50 kDa

Preparation

This antibody was obtained by immunization of Whirlin recombinant protein (Accession Number: BC014524). Purification method: Antigen affinity purified.

Formulation

PBS with 0.1% sodium azide and 50% glycerol pH 7.3.

Storage

Store at -20°C. DO NOT ALIQUOT

Clonality

Polyclonal

Ig Type

Rabbit IgG

Applications

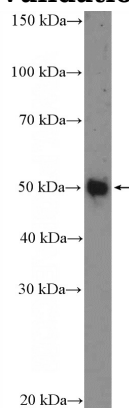
ELISA, WB

Dilutions

Recommended Dilution:

WB: 1:500-1:5000

Validations



COLO 320 cells were subjected to SDS PAGE followed by western blot with Catalog No:116825(DFNB31 Antibody) at dilution of 1:1000