

# SULT1A1 antibody



Catalog Number: 115825

## Product name

SULT1A1 antibody

IP: 1:500-1:5000

IF: 1:20-1:200

## Specificity

Human, Mouse, Rat; other species not tested.

## Antibody description

SULT1A1 Rabbit Polyclonal antibody. Positive IP detected in mouse liver tissue. Positive WB detected in mouse liver tissue, Jurkat cells, rat liver tissue. Positive IF detected in HepG2 cells. Positive FC detected in HepG2 cells. Observed molecular weight by Western-blot: 34kd

## Preparation

This antibody was obtained by immunization of SULT1A1 recombinant protein (Accession Number: XM\_017023611). Purification method: Antigen affinity purified.

## Formulation

PBS with 0.1% sodium azide and 50% glycerol pH 7.3.

## Storage

Store at -20°C. DO NOT ALIQUOT

## Clonality

Polyclonal

## Ig Type

Rabbit IgG

## Applications

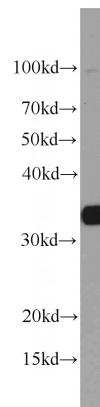
ELISA, WB, IF, IP, FC

## Dilutions

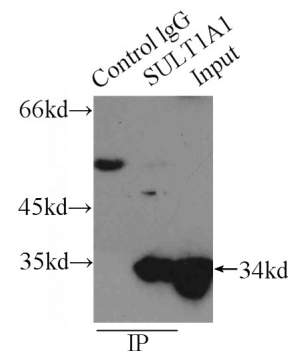
Recommended Dilution:

WB: 1:500-1:5000

## Validations

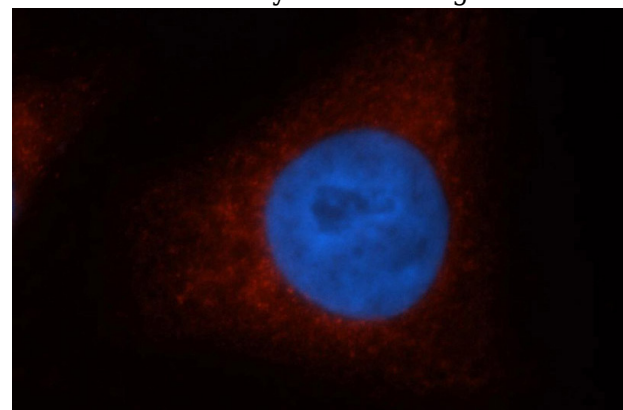


mouse liver tissue were subjected to SDS PAGE followed by western blot with Catalog No:115825(SULT1A1 antibody) at dilution of



1:1000

IP Result of anti-SULT1A1 (IP:Catalog No:115825, 3ug; Detection:Catalog No:115825 1:1000) with mouse liver tissue lysate 12500ug.



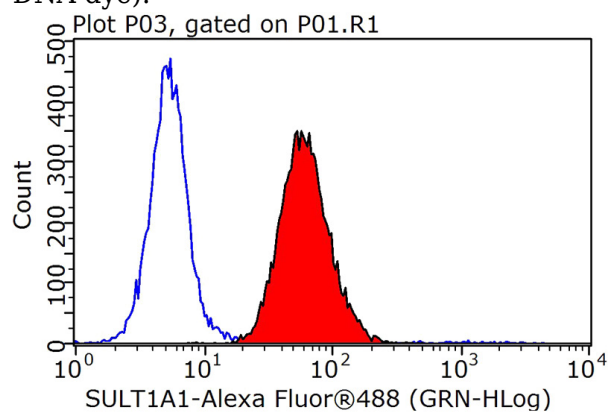
Immunofluorescent analysis of HepG2 cells, using

# SULT1A1 antibody



Catalog Number: 115825

SULT1A1 antibody Catalog No:115825 at 1:50 dilution and Rhodamine-labeled goat anti-rabbit IgG (red). Blue pseudocolor = DAPI (fluorescent DNA dye).



1X10<sup>6</sup> HepG2 cells were stained with 0.2ug SULT1A1 antibody (Catalog No:115825, red) and control antibody (blue). Fixed with 90% MeOH blocked with 3% BSA (30 min). Alexa Fluor 488-conjugated AffiniPure Goat Anti-Rabbit IgG(H+L) with dilution 1:1000.