

## General Information

### Gene Name Synonym

T-cell receptor T3 delta chain; CD antigen CD3d

### Protein Construction

A DNA sequence encoding the extracellular domain (Met1-Ala105) of human CD3D (P04234) was fused with a flag tag at the C-terminus, constructed the plasmid 1; A DNA sequence encoding the extracellular domain (Met1-Asp126) of human CD3E (P07766) was fused with a polyhistidine tag at the C-terminus, constructed the plasmid 2. The two plasmids were co-expressed and the human CD3D/CD3E heterodimer was purified.

### Organism

Human

### Expression Host

Human Cells

## QC Testing

### Activity

Measured by its binding ability in a functional ELISA.

Immobilized human CD3D & CD3E Heterodimer Protein (Cat:CT038-H2508H) at 10 µg/ml (100 µl/well) can bind OKT3-mIgG2a. The EC<sub>50</sub> of OKT3-mIgG2a is 7.0-18.0 ng/ml.

### Purity

(43.8+13.1+41.9) % as determined by SDS-PAGE

### Endotoxin

< 1.0 EU per µg of the protein as determined by the LAL method

### Stability

Samples are stable for up to twelve months from date of receipt at -70°C

### Predicted N terminal

Phe 22 & Asp 23

### Molecular Mass

The recombinant heterodimer of human CD3D&CD3E comprises 272 (126+146) amino acids and has a calculated molecular mass of 31.2 (14.4+16.8)kDa. As a result of glycosylation, the apparent molecular mass of human CD3D&CD3E heterodimer is approximately 20, 22 and 26 kDa in SDS-PAGE under reducing conditions.

### Formulation

Lyophilized from sterile PBS, pH 7.4.

1. 5 % trehalose and mannitol are added as protectants before lyophilization.

2. Please contact us for any concerns or special requirements.

## Usage Guide

### Storage

Store it under sterile conditions at -20°C to -80°C. It is recommended that the protein be aliquoted for optimal storage. Avoid repeated freeze-thaw cycles.

### Reconstitution

Adding sterile water, prepare a stock solution of 0.25 mg/ml. Concentration is measured by UV-Vis.

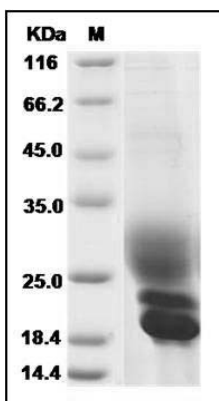
### SDS-PAGE

# Human CD3D & CD3E recombinant protein



Catalog Number: 504825

---



Human CD3D & CD3E Heterodimer Protein SDS-PAGE