

PHLPP antibody



Catalog Number: 113825

Product name

PHLPP antibody

WB: 1:500-1:5000

IP: 1:500-1:5000

Specificity

Human, Mouse; other species not tested.

IHC: 1:20-1:200

IF: 1:20-1:200

Antibody description

PHLPP Rabbit Polyclonal antibody. Positive IF detected in HepG2 cells. Positive IHC detected in human liver tissue. Positive WB detected in mouse brain tissue, HEK-293 cells, HeLa cells, mouse liver tissue. Positive IP detected in mouse brain tissue. Observed molecular weight by Western-blot: 185 kDa

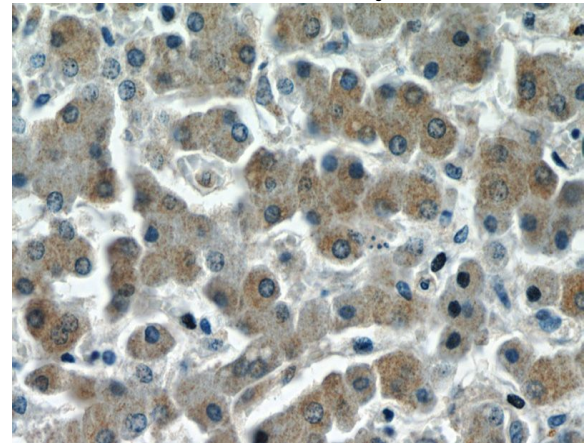
Validations



mouse brain tissue were subjected to SDS PAGE followed by western blot with Catalog No:113825(PHLPP antibody) at dilution of 1:1000

Preparation

This antibody was obtained by immunization of PHLPP recombinant protein (Accession Number: BC126277). Purification method: Antigen affinity purified.



Formulation

PBS with 0.02% sodium azide and 50% glycerol pH 7.3.

Storage

Store at -20°C. DO NOT ALIQUOT

Immunohistochemistry of paraffin-embedded human liver slide using Catalog No:113825(PHLPP Antibody) at dilution of 1:50

Clonality

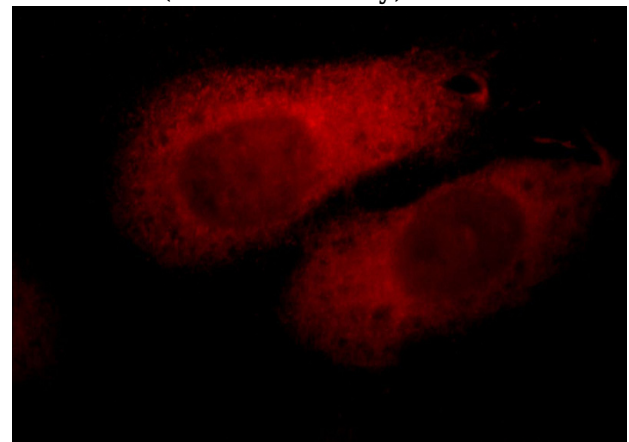
Polyclonal

Ig Type

Rabbit IgG

Applications

ELISA, WB, IF, IHC, IP



Dilutions

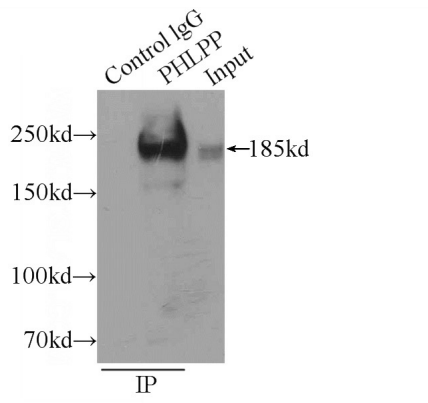
Recommended Dilution:

Immunofluorescent analysis of HepG2 cells, using PHLPP antibody Catalog No:113825 at 1:50 dilution and Rhodamine-labeled goat anti-rabbit

PHLPP antibody

Catalog Number: 113825

IP Result of anti-PHLPP (IP:Catalog No:113825, 5ug; Detection:Catalog No:113825 1:1000) with mouse brain tissue lysate 5000ug.



IgG (red).