

MRPL36 antibody



Catalog Number: 112825

Product name

MRPL36 antibody

Specificity

Human; other species not tested.

Antibody description

MRPL36 Rabbit Polyclonal antibody. Positive IHC detected in human testis tissue, human colon tissue.

Preparation

This antibody was obtained by immunization of MRPL36 recombinant protein (Accession Number: XM_017009752). Purification method: Antigen affinity purified.

Formulation

PBS with 0.02% sodium azide and 50% glycerol pH 7.3.

Storage

Store at -20°C. DO NOT ALIQUOT

Clonality

Polyclonal

Ig Type

Rabbit IgG

Applications

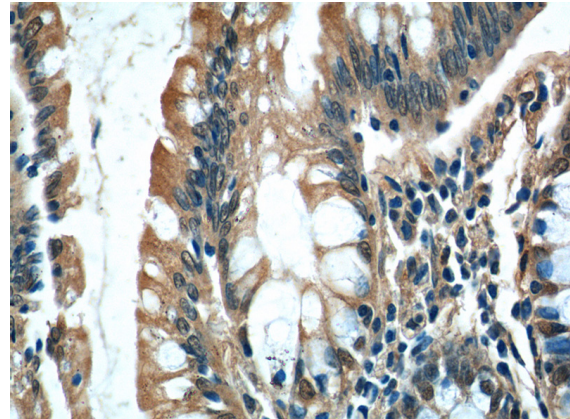
ELISA, IHC

Dilutions

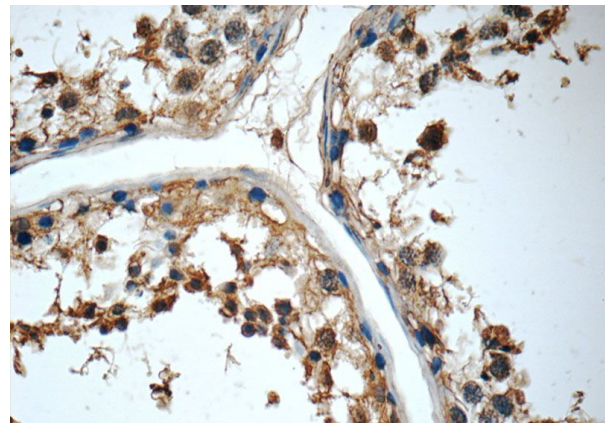
Recommended Dilution:

IHC: 1:20-1:200

Validations



Immunohistochemistry of paraffin-embedded human colon tissue slide using Catalog No:112825(MRPL36 Antibody) at dilution of 1:50 (under 40x lens)



Immunohistochemistry of paraffin-embedded human testis tissue slide using Catalog No:112825(MRPL36 Antibody) at dilution of 1:50 (under 40x lens)