

IQGAP2 antibody

Catalog Number: 111825

Product name

IQGAP2 antibody

Specificity

Human; other species not tested.

Antibody description

IQGAP2 Rabbit Polyclonal antibody. Positive IHC detected in human liver cancer tissue, human pancreas tissue, human testis tissue. Positive WB detected in HepG2 cells. Observed molecular weight by Western-blot: 181kDa, 65kDa

Preparation

This antibody was obtained by immunization of Peptide (Accession Number: NM_006633). Purification method: Antigen affinity purified.

Formulation

PBS with 0.02% sodium azide and 50% glycerol pH 7.3.

Storage

Store at -20°C. DO NOT ALIQUOT

Clonality

Polyclonal

Ig Type

Rabbit IgG

Applications

ELISA, IHC, WB

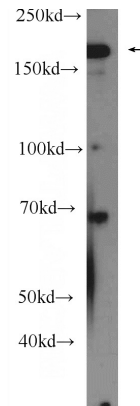
Dilutions

Recommended Dilution:

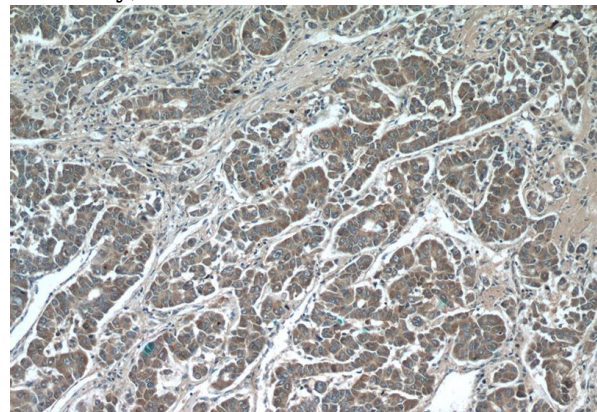
WB: 1:200-1:1000

IHC: 1:20-1:200

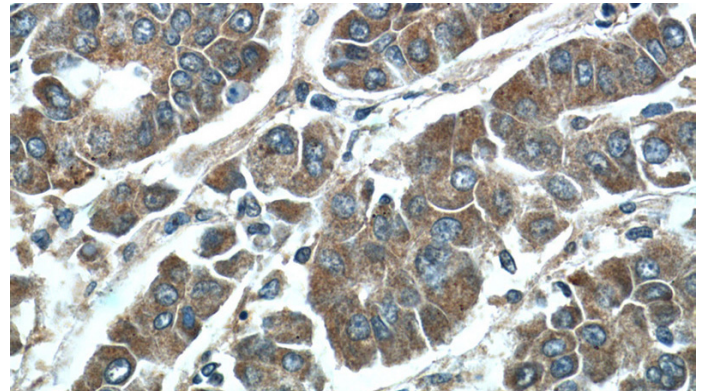
Validations



HepG2 cells were subjected to SDS PAGE followed by western blot with Catalog No:111825(IQGAP2 Antibody) at dilution of 1:300



Immunohistochemistry of paraffin-embedded human liver cancer tissue slide using Catalog No:111825(IQGAP2 Antibody) at dilution of 1:50 (under 10x lens)



Immunohistochemistry of paraffin-embedded human liver cancer tissue slide using Catalog No:111825(IQGAP2 Antibody) at dilution of 1:50 (under 40x lens)