

GAGE2D antibody



Catalog Number: 110825

Product name

GAGE2D antibody

IHC: 1:20-1:200

IF: 1:10-1:100

Specificity

Human; other species not tested.

Antibody description

GAGE2D Rabbit Polyclonal antibody. Positive IF detected in HepG2 cells. Positive IHC detected in human liver cancer tissue, human testis tissue. Positive WB detected in K-562 cells, HeLa cells, human testis tissue. Observed molecular weight by Western-blot: 18-22kd

Preparation

This antibody was obtained by immunization of GAGE2D recombinant protein (Accession Number: NM_001127200). Purification method: Antigen affinity purified.

Formulation

PBS with 0.1% sodium azide and 50% glycerol pH 7.3.

Storage

Store at -20°C. DO NOT ALIQUOT

Clonality

Polyclonal

Ig Type

Rabbit IgG

Applications

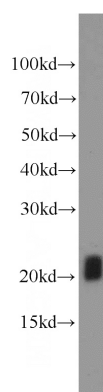
ELISA, WB, IF, IHC

Dilutions

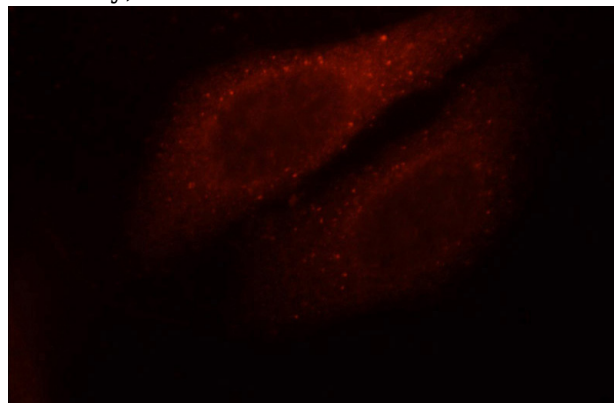
Recommended Dilution:

WB: 1:500-1:5000

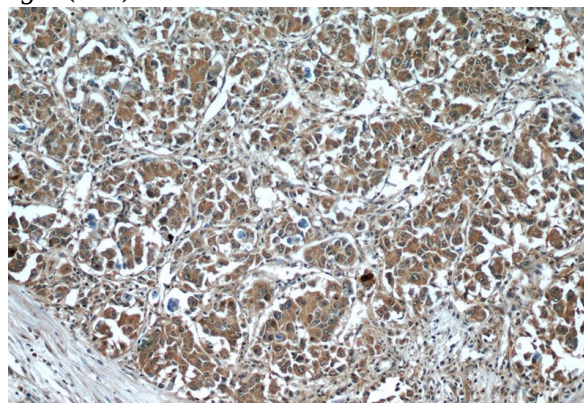
Validations



K-562 cells were subjected to SDS PAGE followed by western blot with Catalog No:110825(GAGE2D antibody) at dilution of 1:1000



Immunofluorescent analysis of HepG2 cells, using GAGE2D antibody Catalog No:110825 at 1:25 dilution and Rhodamine-labeled goat anti-rabbit IgG (red).

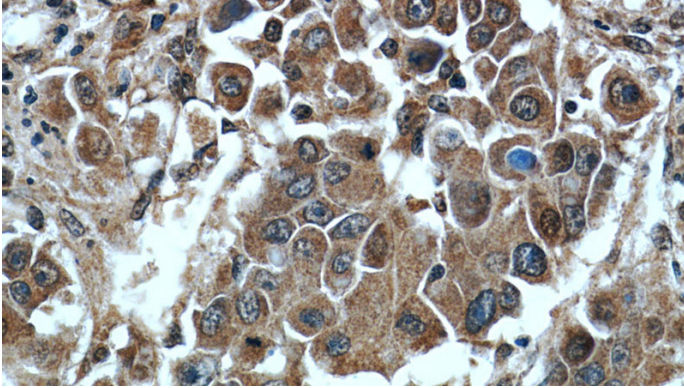


Immunohistochemistry of paraffin-embedded

GAGE2D antibody

Catalog Number: 110825

human liver cancer tissue slide using Catalog No:110825(GAGE2D Antibody) at dilution of 1:50 (under 10x lens)



Immunohistochemistry of paraffin-embedded human liver cancer tissue slide using Catalog No:110825(GAGE2D Antibody) at dilution of 1:50 (under 40x lens)