

# Anti-BMP8A antibody



Catalog Number: 176425

## Product name

WB, IHC-P

Anti-BMP8A antibody

## Dilutions

## Specificity

WB: 1:500-1:2000

Human, Mouse, Rat

IHC-P: 1:100-1:300

## Antibody description

Rabbit polyclonal antibody to BMP8A

## Preparation

This antigen of this antibody was the antiserum was produced against synthesized peptide derived from the internal region of human bmp8a. aa range:241-290

## Formulation

Liquid, Liquid in PBS containing 50% glycerol, 0.5% BSA and 0.02% sodium azide.

## Storage

Store at +4°C after thawing. Aliquot store at -20°C or -80°C. Avoid repeated freeze / thaw cycles.

## Clonality

Polyclonal

## Ig Type

Rabbit IgG

## Applications

## Validations



Fig1:: Western Blot analysis of Jurkat cells using BMP-8A Polyclonal Antibody.. Secondary antibody [catalog#: HA1001) was diluted at 1:20000

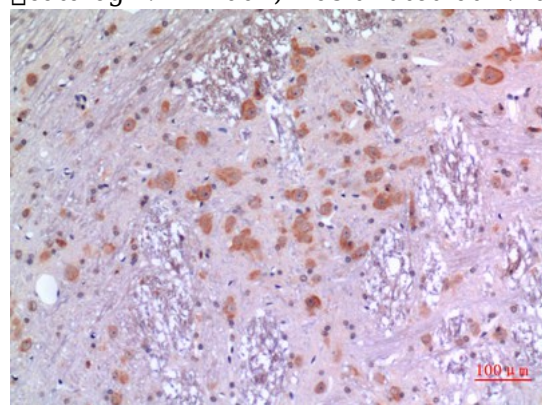


Fig2:: Immunohistochemical analysis of paraffin-embedded rat-brain, antibody was diluted at 1:100