

# MAP4K3 antibody



Catalog Number: 112425

## Product name

MAP4K3 antibody

Recommended Dilution:

WB: 1:1000-1:10000

IHC: 1:20-1:200

## Immunogen

[Human MAP4K3 Recombinant protein \(His tag\)](#)

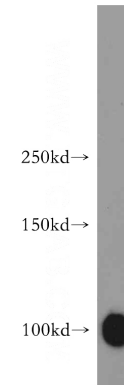
## Validations

## Specificity

Human, Mouse, Rat; other species not tested.

## Antibody description

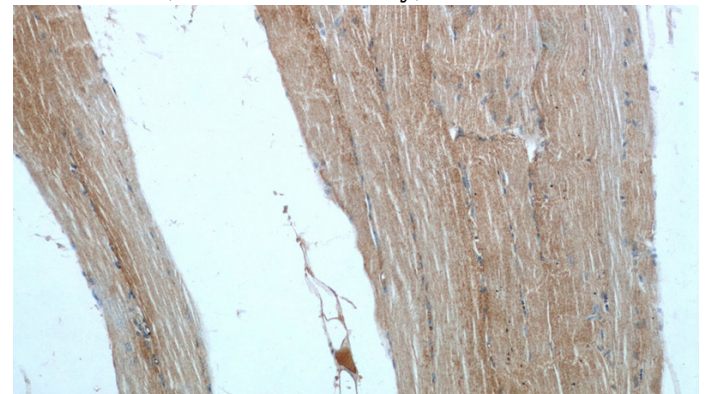
MAP4K3 Rabbit Polyclonal antibody. Positive WB detected in human skeletal muscle tissue, HeLa cells, human brain tissue. Positive IHC detected in human skeletal muscle tissue, human heart tissue. Observed molecular weight by Western-blot: 100kd



human skeletal muscle tissue were subjected to SDS PAGE followed by western blot with Catalog No:112425(MAP4K3 antibody) at dilution of 1:500

## Preparation

This antibody was obtained by immunization of MAP4K3 recombinant protein (Accession Number: NM\_001270425). Purification method: Antigen affinity purified.



## Formulation

PBS with 0.02% sodium azide and 50% glycerol pH 7.3.

## Storage

Store at -20°C. DO NOT ALIQUOT

Immunohistochemical of paraffin-embedded human skeletal muscle using Catalog No:112425(MAP4K3 antibody) at dilution of 1:100 (under 10x lens)

## Clonality

Polyclonal

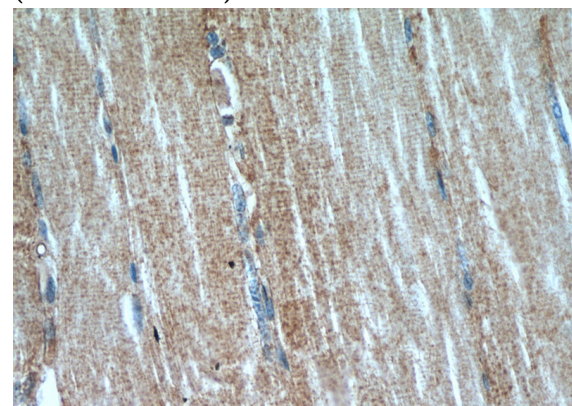
## Ig Type

Rabbit IgG

## Applications

ELISA, WB, IHC

## Dilutions



# MAP4K3 antibody



Catalog Number: 112425

---

Immunohistochemical of paraffin-embedded human skeletal muscle using Catalog

No:112425(MAP4K3 antibody) at dilution of 1:100 (under 40x lens)