

# Anti-MECOM antibody



Catalog Number: 142425

## Product name

Anti-MECOM antibody

## Specificity

Human MECOM

## Antibody description

Rabbit Polyclonal to Human MECOM

## Preparation

Produced in rabbits immunized with a synthetic peptide corresponding to the C-terminus of the Human MECOM, and purified by antigen affinity chromatography.

## Formulation

0.2 µm filtered solution in PBS

## Storage

This antibody can be stored at 2°C-8°C for one month without detectable loss of activity. Antibody products are stable for twelve months from date of receipt when stored at -20°C to -80°C.

Preservative-Free.

Sodium azide is recommended to avoid contamination (final concentration 0.05%-0.1%). It is toxic to cells and should be disposed of properly. Avoid repeated freeze-thaw cycles.

## Clonality

Polyclonal

## Ig Type

Rabbit IgG

## Applications

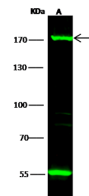
WB, ICC/IF, IF

## Dilutions

WB: 5-10 µg/ml

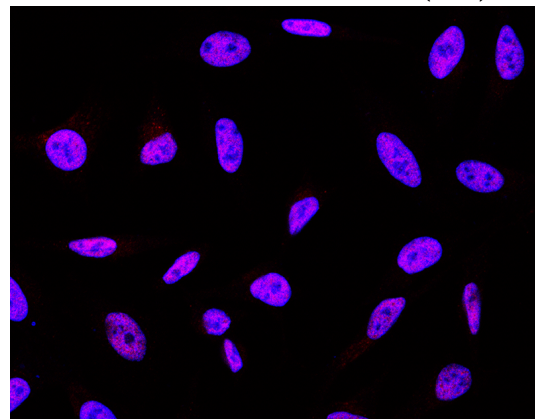
ICC/IF: 0.5-3 µg/mL

## Validations



Items	Lanes	A
Sample (whole cell lysate)		A549
Sample Volume (µg/lane)		30
Gel		7.5% SDS-PAGE reducing gel
Recommended Concentration		5-10 µg/ml
Secondary Antibody		Dylight 800-labeled Antibody to Rabbit IgG (H+L), at 1:5000 dilution. Developed using Odyssey imaging system.
Explanation		Predicted band size : 118 kDa Observed band size : 170 kDa Additional bands at : 55 kDa (We are unsure as to the identity of these extra bands.)

Human MECOM Western blot (WB) 14591



Human MECOM Immunofluorescence(IF) 14592