

APOBEC3B antibody

Catalog Number: 108025

Product name

APOBEC3B antibody

IP: 1:200-1:2000

IHC: 1:20-1:200

Specificity

Human; other species not tested.

Antibody description

APOBEC3B Rabbit Polyclonal antibody. Positive IHC detected in human breast cancer tissue. Positive WB detected in MDA-MB-453s cells, Transfected HEK-293 cells. Positive IP detected in mouse spleen tissue. Observed molecular weight by Western-blot: 30 kDa

Preparation

This antibody was obtained by immunization of APOBEC3B recombinant protein (Accession Number: BC053859). Purification method: Antigen affinity purified.

Formulation

PBS with 0.1% sodium azide and 50% glycerol pH 7.3.

Storage

Store at -20°C. DO NOT ALIQUOT

Clonality

Polyclonal

Ig Type

Rabbit IgG

Applications

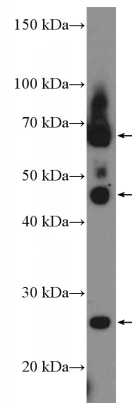
ELISA, IP, IHC, WB

Dilutions

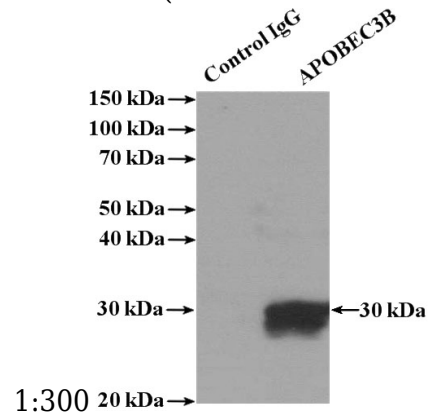
Recommended Dilution:

WB: 1:200-1:1000

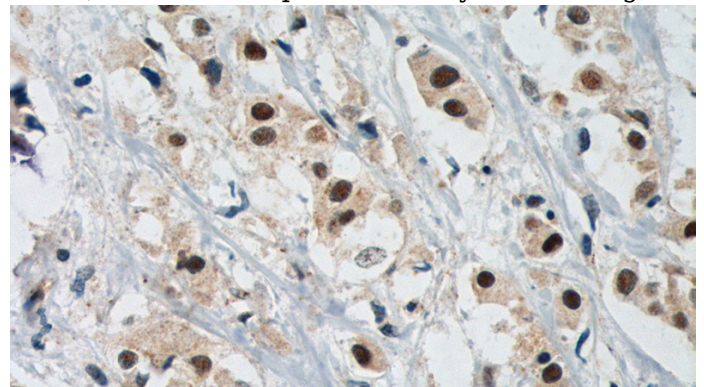
Validations



MDA-MB-453s cells were subjected to SDS PAGE followed by western blot with Catalog No:108025(APOBEC3B Antibody) at dilution of



IP Result of anti-APOBEC3B (IP:Catalog No:108025, 4ug; Detection:Catalog No:108025 1:500) with mouse spleen tissue lysate 4000ug.



Immunohistochemistry of paraffin-embedded human breast cancer tissue slide using Catalog

APOBEC3B antibody



Catalog Number: 108025

No:108025(APOBEC3B Antibody) at dilution of

1:200 (under 40x lens). heat mediated antigen
retrieved with Tris-EDTA buffer(pH9).