

# KDM3A,JMJD1A antibody



Catalog Number: 112025

## Product name

KDM3A,JMJD1A antibody

WB: 1:1000-1:10000

IP: 1:500-1:5000

## Specificity

Human, Mouse; other species not tested.

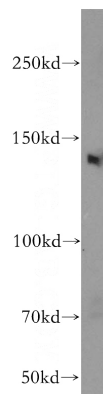
IHC: 1:20-1:200

IF: 1:20-1:200

## Antibody description

KDM3A,JMJD1A Rabbit Polyclonal antibody. Positive IHC detected in human ovary tumor tissue, human kidney tissue, human ovary tissue. Positive IF detected in HepG2 cells. Positive IP detected in HeLa cells. Positive WB detected in HeLa cells, MCF7 cells. Observed molecular weight by Western-blot: 150 kDa

## Validations



## Preparation

This antibody was obtained by immunization of KDM3A,JMJD1A recombinant protein (Accession Number: BC038297). Purification method: Antigen affinity purified.

HeLa cells were subjected to SDS PAGE followed by western blot with Catalog No:112025(KDM3A,JMJD1A antibody) at dilution

## Formulation

PBS with 0.1% sodium azide and 50% glycerol pH 7.3.

## Storage

Store at -20°C. DO NOT ALIQUOT

## Clonality

Polyclonal

## Ig Type

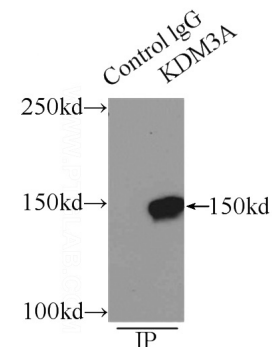
Rabbit IgG

## Applications

ELISA, IF, IP, WB, IHC

## Dilutions

Recommended Dilution:



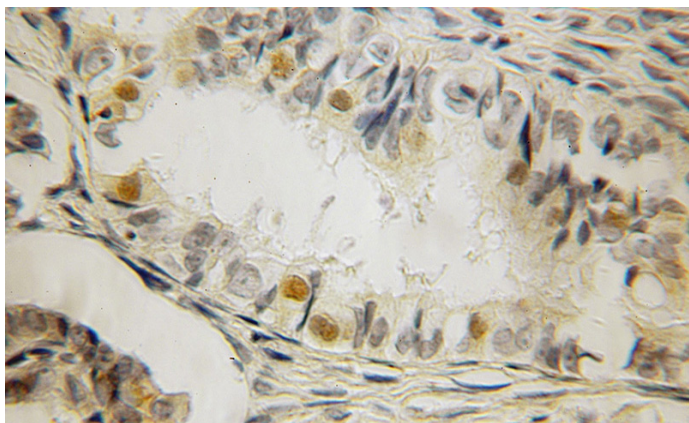
of 1:2000

IP Result of anti-KDM3A,JMJD1A (IP:Catalog No:112025, 5ug; Detection:Catalog No:112025 1:1000) with HeLa cells lysate 2500ug.

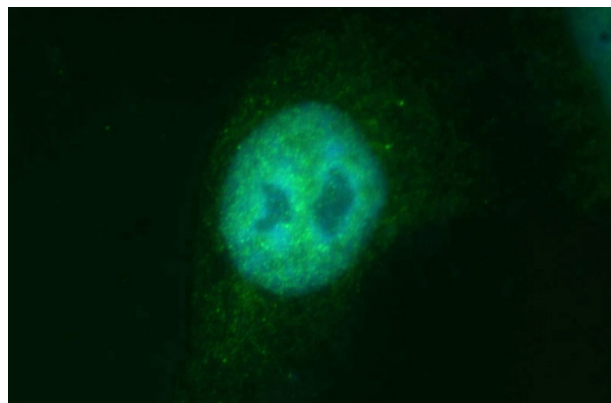
# KDM3A,JMJD1A antibody

Catalog Number: 112025

---



Immunohistochemical of paraffin-embedded human ovary tumor using Catalog No:112025(KDM3A,JMJD1A antibody) at dilution of 1:100 (under 10x lens)



Immunofluorescent analysis of HepG2 cells, using KDM3A antibody Catalog No:112025 at 1:50 dilution and FITC-labeled donkey anti-rabbit IgG(green). Blue pseudocolor = DAPI (fluorescent DNA dye).