

Anti-Profilin 2 / PFN2 antibody



Catalog Number: 100025

Product name

Anti-Profilin 2 / PFN2 antibody

Immunogen

[Human Profilin 2 / PFN2 \(His Tag\) recombinant protein](#)

Specificity

Human Profilin 2 / PFN2

Antibody description

Rabbit polyclonal to Profilin 2 / PFN2

Preparation

Produced in rabbits immunized with purified, recombinant Human Profilin 2 / PFN2 (rh Profilin 2 / PFN2; AAH18049.1; Met1-Phe140). Profilin 2 / PFN2 specific IgG was purified by Human Profilin 2 / PFN2 affinity chromatography.

Formulation

0.2 μ m filtered solution in PBS

Storage

This antibody can be stored at 2°C-8°C for one month without detectable loss of activity. Antibody products are stable for twelve months from date of receipt when stored at -20°C to -80°C.

Preservative-Free.

Sodium azide is recommended to avoid contamination (final concentration 0.05%-0.1%). It is toxic to cells and should be disposed of properly. Avoid repeated freeze-thaw cycles.

Clonality

Polyclonal

Ig Type

Rabbit IgG

Applications

ELISA, WB, IHC-P

Dilutions

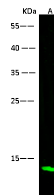
WB: 5-10 μ g/ml

ELISA: 0.1-0.2 μ g/mL

This antibody can be used at 0.1-0.2 μ g/mL with the appropriate secondary reagents to detect Human Profilin 2 / PFN2. The detection limit for Human Profilin 2 / PFN2 is < 0.039 ng/well.

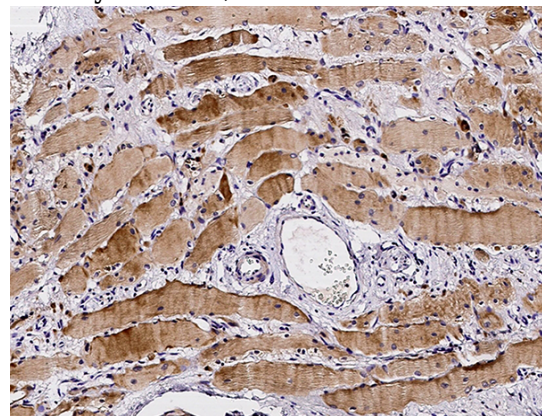
IHC-P: 0.05-0.5 μ g/ml

Validations



Lanes	A
Sample (whole cell lysate)	H1299
Sample Volume (μ g/lane)	30
Gel	13% SDS-PAGE reducing gel
Recommended Concentration	5-10 μ g/ml
Secondary Antibody	Dylight 800-labeled Antibody To Rabbit IgG (H+L), at 1:5000 dilution
Developed using Odyssey imaging system.	
Explanation	Predicted band size : 15 kDa Observed band size : 13 kDa

Profilin 2 / PFN2 Antibody, Rabbit PAb, Antigen Affinity Purified, Western blot

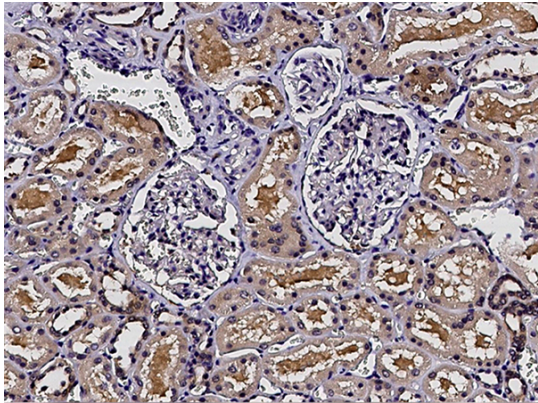


Profilin 2 / PFN2 Antibody, Rabbit PAb, Antigen Affinity Purified, Immunohistochemistry

Anti-Profilin 2 / PFN2 antibody



Catalog Number: 100025



Profilin 2 / PFN2 Antibody, Rabbit PAb, Antigen Affinity Purified, Immunohistochemistry