

# Anti-c-Rel Rabbit antibody



Catalog Number: 167715

## Product name

Anti-c-Rel Rabbit antibody

## Specificity

Human

## Antibody description

c-Rel Rabbit monoclonal antibody

## Preparation

Antigen: A synthetic peptide of human c-Rel

## Formulation

50nM Tris-Glycine(pH 7.4), 0.15M NaCl,  
40%Glycerol, 0.01% sodium azide and 0.05% BSA

## Storage

Store at 4°C short term. Store at -20°C long term.  
Avoid freeze / thaw cycle.

## Clonality

Monoclonal

## Ig Type

Rabbit IgG

## Applications

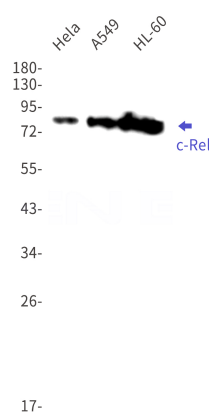
WB, IP

## Dilutions

WB: 1/2000-1/10000

IP: 1/20

## Validations



Western blot detection of c-Rel in HeLa,A549,HL-60 cell lysates using c-Rel Rabbit mAb(1:1000 diluted).Predicted band size:69kDa.Observed band size:78kDa.