

Anti-RCA antibody

Catalog Number: 176715

Product name

Anti-RCA antibody

Specificity

Arabidopsis thaliana, *Nicotiana tabacum*, *Oryza sativa*, *Zea mays*, *Spinacia oleracea*, *Morus alba*

Antibody description

Rabbit polyclonal antibody to RCA

Preparation

This antigen of this antibody was synthetic peptide within *Arabidopsis thaliana* Rubisco activase aa 190-233.

Formulation

Liquid, 1*PBS (pH7.4), 0.2% BSA, 40% Glycerol.
Preservative: 0.05% Sodium Azide.

Storage

Store at +4°C after thawing. Aliquot store at -20°C or -80°C. Avoid repeated freeze / thaw cycles.

Clonality

Polyclonal

Ig Type

Rabbit IgG

Applications

WB, IHC-P, IF

Dilutions

WB: 1:10,000-1:50,000

IHC-P: 1:50-1:200

IF: 1:50-1:200

Validations

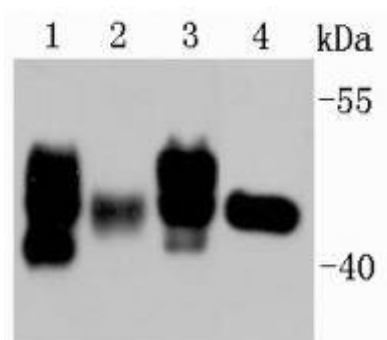


Fig1: Western blot analysis on different tissue lysates using anti-Rubisco activase rabbit polyclonal antibody.; Positive control.; Lane 1: Mulberry leaf; Lane 2: Rice; Lane 3: *A. thaliana*; Lane 4: *Tabacum*

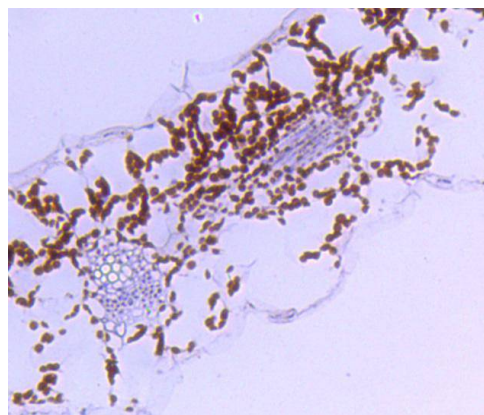


Fig2: Immunohistochemical analysis of paraffin-embedded *A. thaliana* using anti-Rubisco activase rabbit polyclonal antibody. .

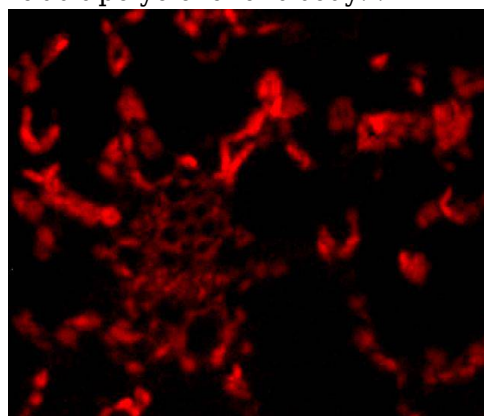


Fig3: Immunofluorescence staining of paraffin-embedded *A. thaliana* using anti-Rubisco activase rabbit polyclonal antibody. .