

Anti-SYT12 antibody



Catalog Number: 175715

Product name

Anti-SYT12 antibody

Specificity

Human, Mouse, Rat, Dog, Pig, Rabbit, Sheep

Antibody description

Rabbit polyclonal antibody to SYT12

Preparation

This antigen of this antibody was klh conjugated synthetic peptide derived from human synaptotagmin xii 301-350/421

Formulation

Liquid, 0.01M TBS(pH7.4) with 1% BSA, 0.03% Proclin300 and 50% Glycerol.

Storage

Store at -20°C for one year. Avoid repeated freeze/thaw cycles. The lyophilized antibody is stable at room temperature for at least one month and for greater than a year when kept at -20°C. When reconstituted in sterile pH 7.4 0.01M PBS or diluent of antibody the antibody is stable for at least two weeks at 2-4°C.

Clonality

Polyclonal

Ig Type

Rabbit IgG

Applications

WB

Dilutions

WB:1:500-2000

Validations

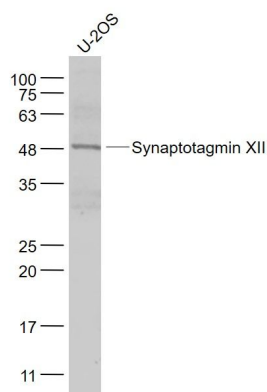


Fig1: Sample:; U-2OS(Human) Cell Lysate at 30 ug; Primary: Anti- Synaptotagmin XII at 1/1000 dilution; Secondary: IRDye800CW Goat Anti-Rabbit IgG at 1/20000 dilution; Predicted band size: 47 kD; Observed band size: 48 kD