

RIPK1-Specific antibody

Catalog Number: 114715

Product name

RIPK1-Specific antibody

IP: 1:200-1:1000

IHC: 1:20-1:200

Specificity

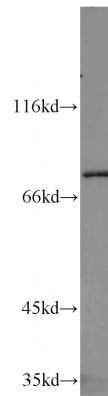
Human, Mouse, Rat; other species not tested.

IF: 1:10-1:100

Antibody description

RIPK1-Specific Rabbit Polyclonal antibody. Positive WB detected in NIH/3T3 cells, HeLa cells, K-562 cells, rat liver tissue, UV treated HeLa cells. Positive IP detected in HeLa cells. Positive IF detected in HepG2 cells. Positive IHC detected in human heart tissue. Observed molecular weight by Western-blot: 74 kDa

Validations



Preparation

This antibody was obtained by immunization of Peptide (Accession Number: NM_003804). Purification method: Antigen affinity purified.

NIH/3T3 cells were subjected to SDS PAGE followed by western blot with Catalog No:114715(RIPK1-Specific antibody) at dilution of

Formulation

PBS with 0.02% sodium azide and 50% glycerol pH 7.3.

Storage

Store at -20°C. DO NOT ALIQUOT

Clonality

Polyclonal

Ig Type

Rabbit IgG

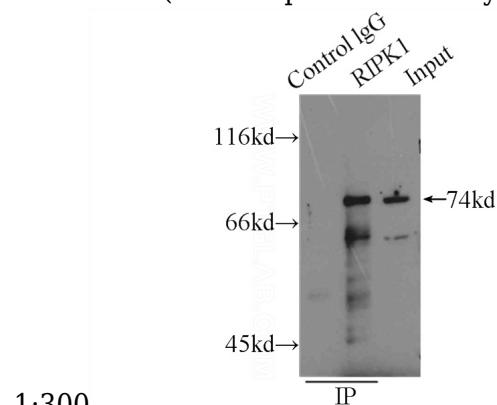
Applications

ELISA, WB, IF, IP, IHC

Dilutions

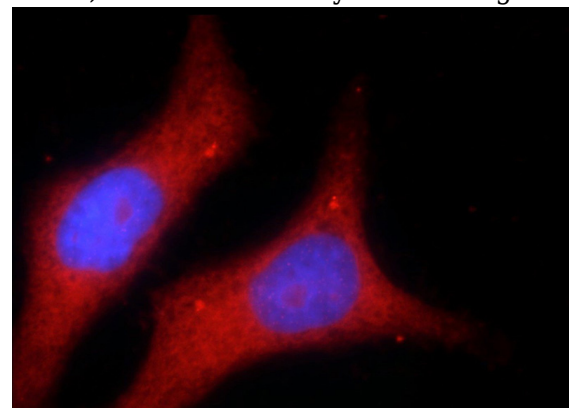
Recommended Dilution:

WB: 1:200-1:1000



1:300

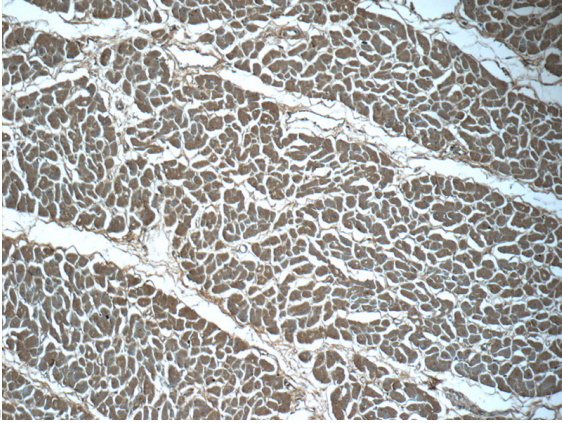
IP Result of anti-RIPK1-Specific (IP:Catalog No:114715, 4ug; Detection:Catalog No:114715 1:300) with HeLa cells lysate 2000ug.



RIPK1-Specific antibody

Catalog Number: 114715

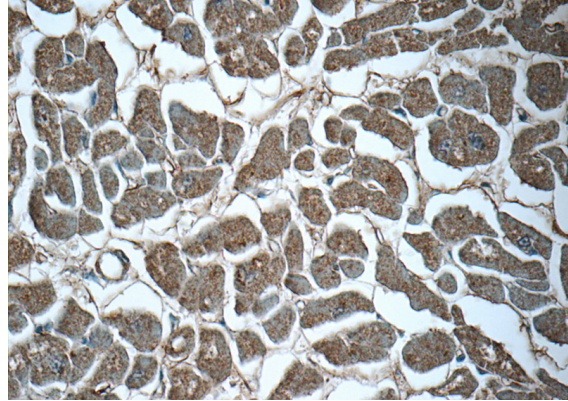
Immunofluorescent analysis of HepG2 cells using Catalog No:114715(RIPK1-Specific Antibody) at dilution of 1:25 and Rhodamine-Goat anti-Rabbit



IgG

Immunohistochemistry of paraffin-embedded human heart tissue slide using Catalog

No:114715(RIPK1-Specific Antibody) at dilution of 1:50 (under 10x lens)



Immunohistochemistry of paraffin-embedded human heart tissue slide using Catalog No:114715(RIPK1-Specific Antibody) at dilution of 1:50 (under 40x lens)