

Human CD3e/CD3 epsilon (His & Fc Tag) recombinant protein



Catalog Number: 504715

General Information

Protein Construction

A DNA sequence encoding the human CD3E (Met 1-Asp126) was fused with the C-terminal polyhistidine-tagged Fc region of human IgG1 at the C-terminus.

Organism

Human

Expression Host

Human Cells

QC Testing

Purity

(84.6+14.1) % as determined by SDS-PAGE

Endotoxin

< 1.0 EU per µg of the protein as determined by the LAL method

Stability

Samples are stable for up to twelve months from date of receipt at -70°C

Predicted N terminal

Gln 22

Molecular Mass

The secreted recombinant human CD3E is a disulfide-linked homodimeric protein. The reduced monomer comprises 355 amino acids and has a

predicted molecular mass of 40 kDa. As a result of glycosylation, it migrates as an approximately 44-53 and 38 kDa band in SDS-PAGE under reducing conditions.

Formulation

Lyophilized from sterile PBS, pH 7.4

1. 5 % trehalose and mannitol are added as protectants before lyophilization.

2. Please contact us for any concerns or special requirements.

Usage Guide

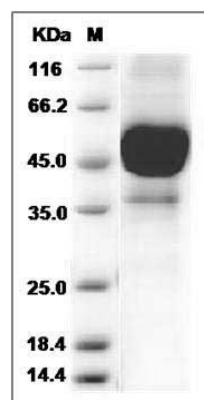
Storage

Store it under sterile conditions at -20°C to -80°C. It is recommended that the protein be aliquoted for optimal storage. Avoid repeated freeze-thaw cycles.

Reconstitution

Adding sterile water, prepare a stock solution of 0.25 mg/ml. Concentration is measured by UV-Vis.

SDS-PAGE



Human CD3e / CD3 epsilon Protein (His & Fc Tag)
SDS-PAGE