

## General Information

### Gene Name Synonym

GP1,2; GP1; GP2; GP2-delta

### Protein Construction

A DNA sequence encoding Sudan ebolavirus (strain Gulu) GP (YP\_138523.1) (Met1-Asp320) was expressed with a polyhistidine tag at the C-terminus.

### Organism

EBOV

### Expression Host

Human Cells

## QC Testing

### Purity

> 95 % as determined by SDS-PAGE.

### Endotoxin

<1.0 EU per  $\mu\text{g}$  protein as determined by the LAL method.

### Stability

Samples are stable for up to twelve months from date of receipt at  $-70^{\circ}\text{C}$

### Predicted N terminal

Met 33

### Molecular Mass

The recombinant virus Sudan ebolavirus (strain Gulu) GP consists 526 amino acids and predicts a molecular mass of 59 kDa.

### Formulation

Lyophilized from sterile PBS, pH 7.4.

1. 5 % trehalose and mannitol are added as protectants before lyophilization.

2. Please contact us for any concerns or special requirements.

## Usage Guide

### Storage

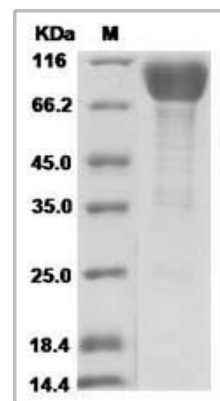
Store it under sterile conditions at  $-20^{\circ}\text{C}$  to  $-80^{\circ}\text{C}$ .

It is recommended that the protein be aliquoted for optimal storage. Avoid repeated freeze-thaw cycles.

### Reconstitution

Adding sterile water, prepare a stock solution of 0.25 mg/ml. Concentration is measured by UV-Vis.

### SDS-PAGE



Ebola virus EBOV (subtype Sudan, strain Gulu) GP-RBD / Glycoprotein Protein (Fc Tag)