

## Product name

ASB8 antibody

## Specificity

human, mouse, rat; other species not tested.

## Antibody description

ASB8 Rabbit Polyclonal antibody. Positive WB detected in human heart tissue. Positive IHC detected in human colon cancer. Observed molecular weight by Western-blot: 32kd

## Preparation

This antibody was obtained by immunization of ASB8 recombinant protein (Accession Number: NM\_024095). Purification method: Antigen affinity purified.

## Formulation

PBS with 0.1% sodium azide and 50% glycerol pH 7.3.

## Storage

Store at -20°C. DO NOT ALIQUOT

## Clonality

Polyclonal

## Ig Type

Rabbit IgG

## Applications

ELISA, WB, IHC

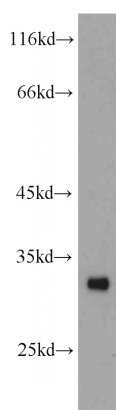
## Dilutions

Recommended Dilution:

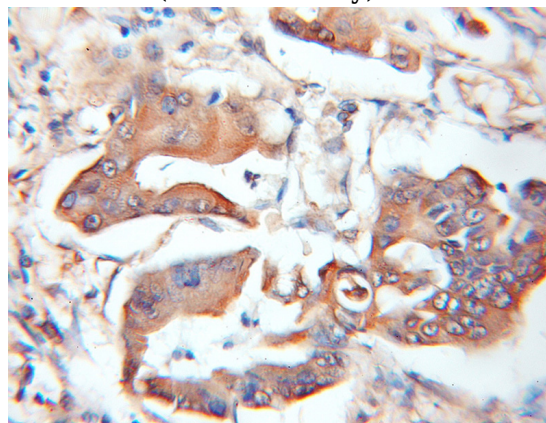
WB: 1:200-1:1000

IHC: 1:20-1:200

## Validations



human heart tissue were subjected to SDS PAGE followed by western blot with Catalog No:108215(ASB8 antibody) at dilution of 1:100



Immunohistochemical of paraffin-embedded human colon cancer using Catalog No:108215(ASB8 antibody) at dilution of 1:100 (under 10x lens)