

# NPHP5,IQCB1 antibody

Catalog Number: 113215

## Product name

NPHP5,IQCB1 antibody

## Specificity

Human,Mouse,Rat; other species not tested.

## Antibody description

NPHP5,IQCB1 Rabbit Polyclonal antibody.  
Positive IF detected in hTERT-RPE1 cells.

## Preparation

This antibody was obtained by immunization of NPHP5,IQCB1 recombinant protein (Accession Number: NM\_001023571). Purification method: Antigen affinity purified.

## Formulation

PBS with 0.1% sodium azide and 50% glycerol pH 7.3.

## Storage

Store at -20°C. DO NOT ALIQUOT

## Clonality

Polyclonal

## Ig Type

Rabbit IgG

## Applications

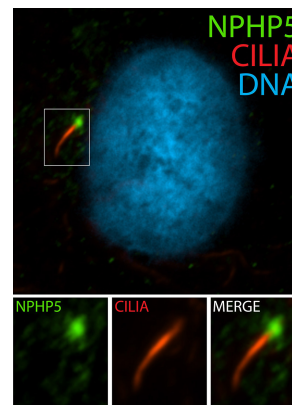
ELISA, IF

## Dilutions

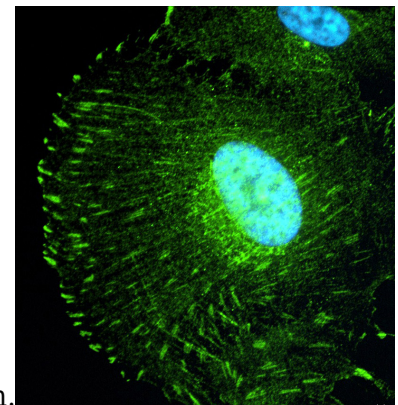
Recommended Dilution:

IF: 1:10-1:100

## Validations



IF Result of anti-NPHP5 (Catalog No:113215) show the base of cilia in human hTERT-RPE1 cells



by Dr. Moshe Kim.

IF Result of anti-NPHP5 (Catalog No:113215,1:50) show 'focal adhesion-like' structures in human hTERT-RPE1 cells by Dr. Moshe Kim. 1% PFA fixation.