

# Human LAMP-1/CD107a/LAMP1 (His Tag) recombinant protein



Catalog Number: 501215

## General Information

### Protein Construction

A DNA sequence encoding the human LAMP1 (NP\_005552.3) (Met 1-Met 382) was expressed, with a polyhistidine tag at the C-terminus.

### Organism

Human

### Expression Host

Human Cells

## QC Testing

### Activity

Measured by its ability to bind biotinylated recombinant human Galectin-3 (Cat:10289-HNAE-E) in a functional ELISA.

### Purity

> 95 % as determined by SDS-PAGE

### Endotoxin

< 1.0 EU per  $\mu\text{g}$  of the protein as determined by the LAL method

### Stability

Samples are stable for up to twelve months from date of receipt at  $-70^{\circ}\text{C}$

### Predicted N terminal

Ala 29

### Molecular Mass

The recombinant human LAMP1 consists of 365

amino acids and predicts a molecular mass of 39.8 kDa. In SDS-PAGE under reducing conditions, the apparent molecular mass of rhLAMP1 is approximately 60-100 kDa due to high levels of glycosylation.

### Formulation

Lyophilized from sterile PBS, pH 7.4

1. 5 % trehalose and mannitol are added as protectants before lyophilization.

2. Please contact us for any concerns or special requirements.

## Usage Guide

### Storage

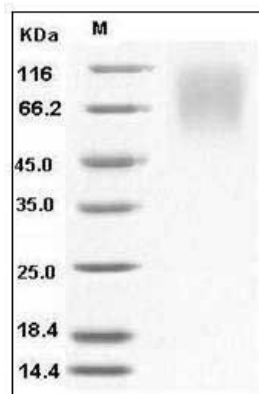
Store it under sterile conditions at  $-20^{\circ}\text{C}$  to  $-80^{\circ}\text{C}$ .

It is recommended that the protein be aliquoted for optimal storage. Avoid repeated freeze-thaw cycles.

### Reconstitution

Adding sterile water, prepare a stock solution of 0.25 mg/ml. Concentration is measured by UV-Vis.

### SDS-PAGE



Human LAMP1 / CD107a Protein (His Tag) SDS-PAGE