

AGBL2/CCP2 antibody



Catalog Number: 107915

Product name

AGBL2/CCP2 antibody

IP: 1:200-1:1000

IF: 1:20-1:200

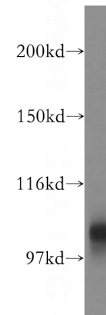
Specificity

Human, Mouse; other species not tested.

Validations

Antibody description

AGBL2/CCP2 Rabbit Polyclonal antibody. Positive IP detected in HeLa cells. Positive WB detected in mouse lung tissue, HeLa cells, human brain tissue, mouse testis tissue. Positive IF detected in MCF-7 cells. Observed molecular weight by Western-blot: 104 kDa, 50 kDa



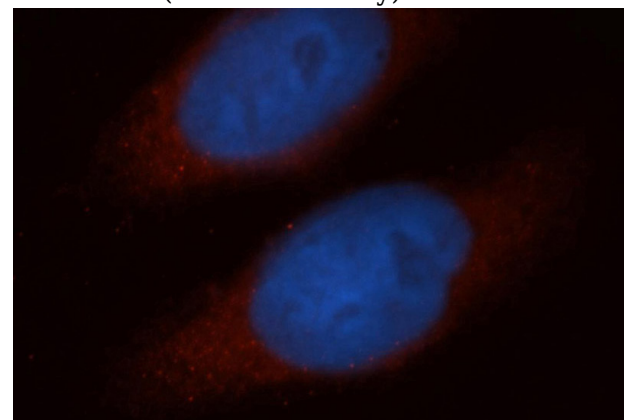
Preparation

This antibody was obtained by immunization of AGBL2/CCP2 recombinant protein (Accession Number: BC028200). Purification method: Antigen affinity purified.

mouse lung tissue were subjected to SDS PAGE followed by western blot with Catalog No:107915(AGBL2 antibody) at dilution of 1:500

Formulation

PBS with 0.02% sodium azide and 50% glycerol pH 7.3.



Storage

Store at -20°C. DO NOT ALIQUOT

Clonality

Polyclonal

Ig Type

Rabbit IgG

Applications

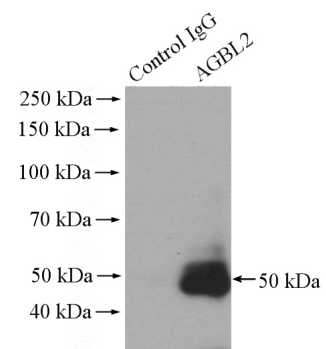
ELISA, WB, IF, IP

Dilutions

Recommended Dilution:

WB: 1:200-1:2000

Immunofluorescent analysis of MCF-7 cells, using AGBL2 antibody Catalog No:107915 at 1:50 dilution and Rhodamine-labeled goat anti-rabbit IgG (red). Blue pseudocolor = DAPI (fluorescent



+ - Normal Rabbit IgG
- + AGBL2 antibody

DNA dye).

AGBL2/CCP2 antibody



Catalog Number: 107915

IP Result of anti-AGBL2 (IP:Catalog No:107915,

4ug; Detection:Catalog No:107915 1:300) with HeLa cells lysate 1200ug.