

# RPS7 antibody

Catalog Number: 114915

## Product name

RPS7 antibody

## Specificity

Human, Mouse, Rat; other species not tested.

## Antibody description

RPS7 Rabbit Polyclonal antibody. Positive WB detected in NIH/3T3 cells, HepG2 cells. Positive IHC detected in human placenta tissue. Observed molecular weight by Western-blot: 22-25 kDa

## Preparation

This antibody was obtained by immunization of RPS7 recombinant protein (Accession Number: NM\_001011). Purification method: Antigen affinity purified.

## Formulation

PBS with 0.1% sodium azide and 50% glycerol pH 7.3.

## Storage

Store at -20°C. DO NOT ALIQUOT

## Clonality

Polyclonal

## Ig Type

Rabbit IgG

## Applications

ELISA, WB, IHC

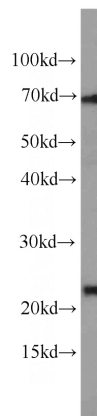
## Dilutions

Recommended Dilution:

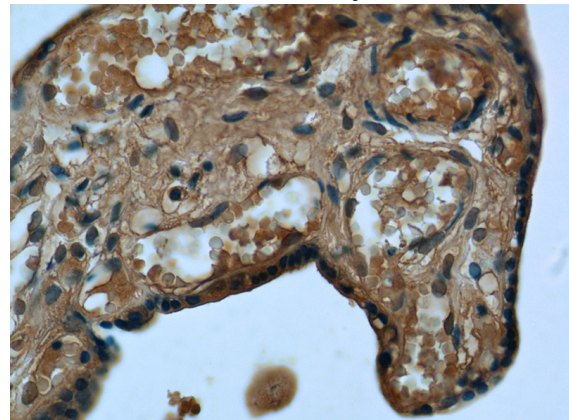
WB: 1:200-1:2000

IHC: 1:20-1:200

## Validations



NIH/3T3 cells were subjected to SDS PAGE followed by western blot with Catalog No:114915(RPS7 antibody) at dilution of 1:600



Immunohistochemistry of paraffin-embedded human placenta tissue slide using Catalog No:114915(RPS7 Antibody) at dilution of 1:50 (under 40x lens)