

# SOX2 antibody

Catalog Number: 115515

## Product name

SOX2 antibody

## Specificity

Human, Mouse, Rat, Zebrafish; other species not tested.

## Antibody description

SOX2 Rabbit Polyclonal antibody. Positive IHC detected in human lung cancer tissue. Positive IF detected in human embryonic stem cells, Zebrafish. Positive WB detected in Transfected HEK-293 cells. Observed molecular weight by Western-blot: 34 kDa-37 kDa

## Preparation

This antibody was obtained by immunization of SOX2 recombinant protein (Accession Number: NM\_003106). Purification method: Antigen affinity purified.

## Formulation

PBS with 0.1% sodium azide and 50% glycerol pH 7.3.

## Storage

Store at -20°C. DO NOT ALIQUOT

## Clonality

Polyclonal

## Ig Type

Rabbit IgG

## Applications

ELISA, IF, WB, IHC

## Dilutions

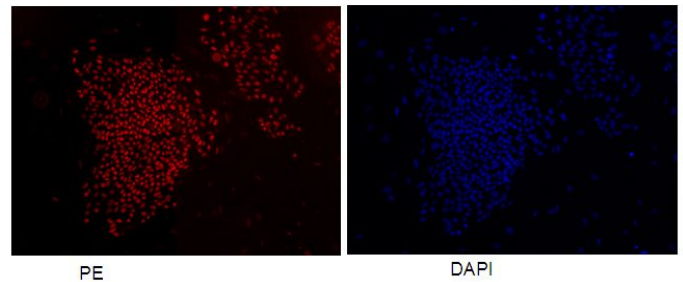
Recommended Dilution:

WB: 1:2000-1:20000

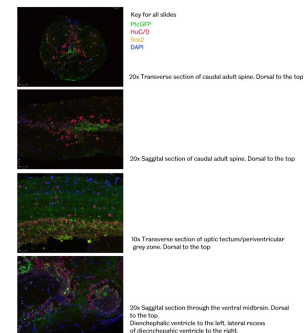
IHC: 1:20-1:200

IF: 1:20-1:200

## Validations

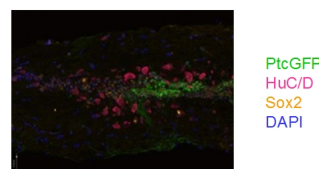


Confocal immunofluorescent analysis of human embryonic stem cells with Catalog No:115515 at dilution of 1:50. The PE shows staining with Catalog No:115515/PE. The DAPI shows nuclear



staining by DAPI.

IF result of anti-SOX2 (Catalog No:115515) in Zebrafish by Dr. Caroline Parkin.

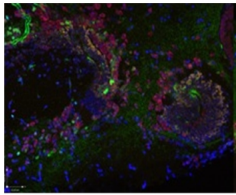


20X Sagittal section of caudal adult spine. Dorsal to the top.

IF result of anti-SOX2 (Catalog No:115515) with the spine of zebrafish by Dr. Caroline.

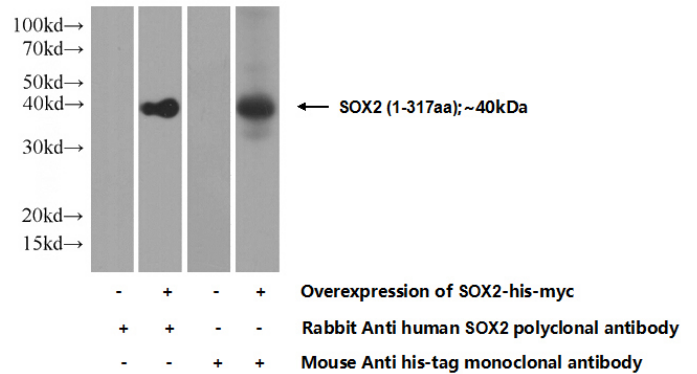
# SOX2 antibody

Catalog Number: 115515



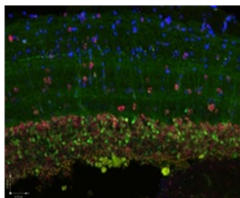
PtcGFP  
HuC/D  
Sox2  
DAPI

20X Sagittal section through the ventral midbrain. Dorsal to the top. Diencephalic ventricle to left. Lateral recess of diencephalic ventricle to the right.



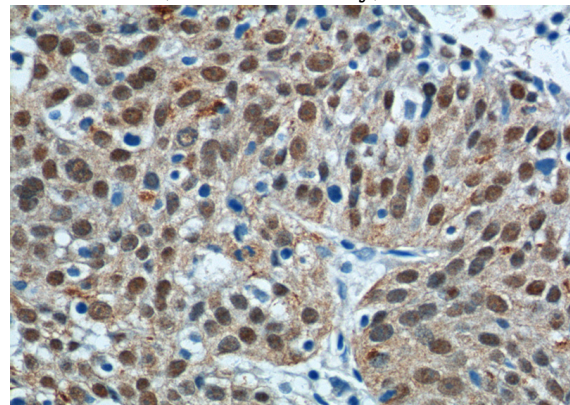
IF result of anti-SOX2 (Catalog No:115515) with the midbrain of zebrafish by Dr.Caroline.

Transfected HEK-293 cells were subjected to SDS PAGE followed by western blot with Catalog No:115515(SOX2 Antibody) at dilution of 1:5000



PtcGFP  
HuC/D  
Sox2  
DAPI

10X Transverse section of optic tectum/periventricular grey zone. Dorsal to the top.



IF result of anti-SOX2 (Catalog No:115515) with the grey zone of zebrafish by Dr.Caroline.

Immunohistochemistry of paraffin-embedded human lung cancer tissue slide using Catalog No:115515(SOX2 Antibody) at dilution of 1:200 (under 40x lens).