

Anti-IL13RA2 antibody



Catalog Number: 175515

Product name

Anti-IL13RA2 antibody

Specificity

Human, Mouse, Rat, Dog

Antibody description

Rabbit polyclonal antibody to IL13RA2

Preparation

This antigen of this antibody was klh conjugated synthetic peptide derived from human il-13ra2 81-180/380

Formulation

Liquid, 0.01M TBS(pH7.4) with 1% BSA, 0.03% Proclin300 and 50% Glycerol.

Storage

Store at -20°C for one year. Avoid repeated freeze/thaw cycles. The lyophilized antibody is stable at room temperature for at least one month and for greater than a year when kept at -20°C. When reconstituted in sterile pH 7.4 0.01M PBS or diluent of antibody the antibody is stable for at least two weeks at 2-4°C.

Clonality

Polyclonal

Ig Type

Rabbit IgG

Applications

WB, FC

Dilutions

WB:1:500-2000

FC:1µg/Test

Validations

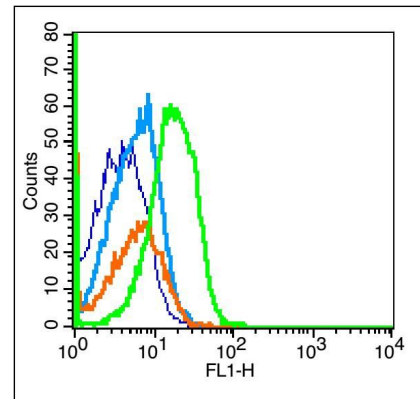
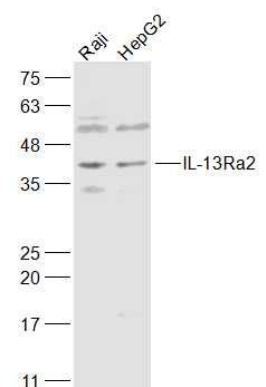


Fig1: Blank control (Black line): Raji (Black).; Primary Antibody (green line): Rabbit Anti-IL-13Ra2 antibody ; Dilution: 1µg /10⁶ cells;; Isotype Control Antibody (orange line): Rabbit IgG .; Secondary Antibody (white blue line): Goat anti-rabbit IgG-PE; Dilution: 1µg /test.; Protocol; The cells were fixed with 4% PFA □10min□and then permeabilized with 0.1% PBS-Tween for 20 min at room temperature. Cells stained with Primary Antibody for 30 min at room temperature. The cells were then incubated in 1 X PBS/2%BSA/10% goat serum to block non-specific protein-protein interactions followed by the antibody for 15 min at room temperature. The secondary antibody used for 40 min at room temperature. Acquisition of



20,000 events was performed.

Fig2: Sample;; Raji(Human) Cell Lysate at 30 ug; HepG2(Human) Cell Lysate at 30 ug; Primary: Anti-IL-13Ra2 at 1/1000 dilution; Secondary: IRDye800CW Goat Anti-Rabbit IgG at 1/20000 dilution; Predicted band size: 41 kD; Observed band size: 41 kD