

# Anti-KGF Rabbit antibody



Catalog Number: 167115

## Product name

Anti-KGF Rabbit antibody

## Specificity

Human, Mouse, Rat

## Antibody description

KGF Rabbit polyclonal antibody

## Preparation

Antigen: A synthetic peptide of human KGF

## Formulation

Supplied in 50nM Tris-Glycine(pH 7.4), 0.15M NaCl, 40%Glycerol, 0.01% sodium azide and 0.05% BSA.

## Storage

Store at -20°C. Stable for 12 months from date of receipt.

## Clonality

Polyclonal

## Ig Type

Rabbit IgG

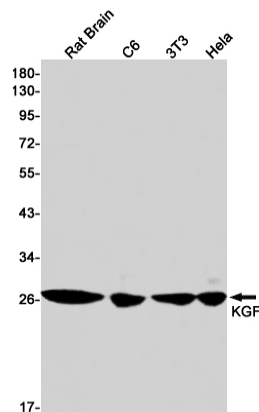
## Applications

WB

## Dilutions

WB: 1/1000-1/5000

## Validations



Western blot detection of KGF in Rat Brain, C6, 3T3, HeLa cell lysates using KGF Rabbit pAb(1:1000 diluted). Predicted band size: 23kDa. Observed band size: 28kDa.