

Thymidylate synthase antibody



Catalog Number: 116115

Product name

Thymidylate synthase antibody

WB: 1:500-1:5000

IP: 1:200-1:2000

Specificity

Human, Mouse, Rat; other species not tested.

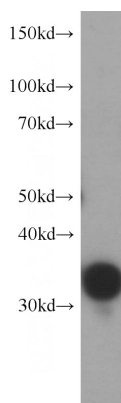
IHC: 1:20-1:200

IF: 1:10-1:100

Antibody description

Thymidylate synthase Rabbit Polyclonal antibody. Positive IF detected in HepG2 cells. Positive IHC detected in human endometrial cancer tissue, human colon cancer tissue. Positive WB detected in HeLa cells, C6 cells, NIH/3T3 cells. Positive IP detected in HeLa cells. Observed molecular weight by Western-blot: 32-36kd

Validations



Preparation

This antibody was obtained by immunization of Thymidylate synthase recombinant protein (Accession Number: NM_001071). Purification method: Antigen affinity purified.

HeLa cells were subjected to SDS PAGE followed by western blot with Catalog No:116115(TYMS antibody) at dilution of 1:1500

Formulation

PBS with 0.02% sodium azide and 50% glycerol pH 7.3.

Storage

Store at -20°C. DO NOT ALIQUOT

Clonality

Polyclonal

Ig Type

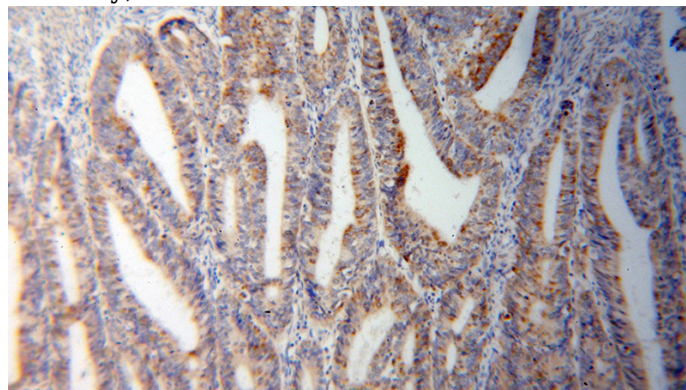
Rabbit IgG

Applications

ELISA, WB, IHC, IF, IP

Dilutions

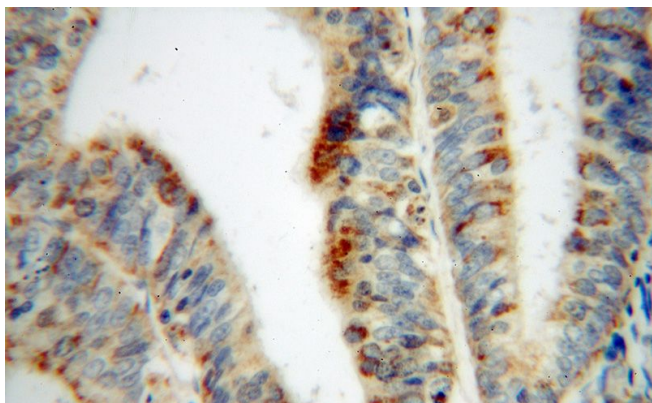
Recommended Dilution:



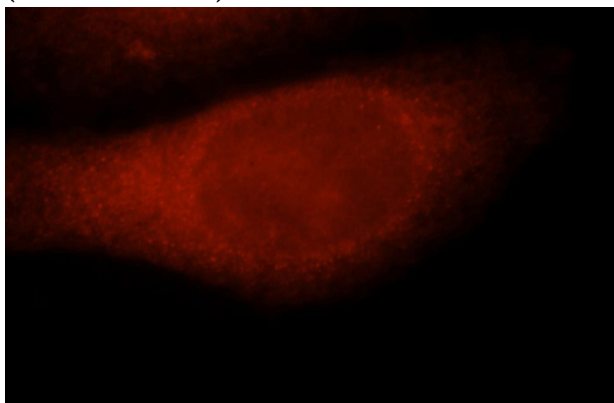
Immunohistochemical of paraffin-embedded human endometrial cancer using Catalog No:116115(TYMS antibody) at dilution of 1:100 (under 10x lens)

Thymidylate synthase antibody

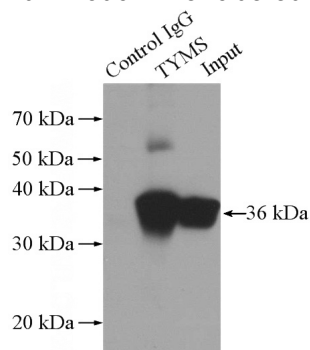
Catalog Number: 116115



Immunohistochemical of paraffin-embedded human endometrial cancer using Catalog No:116115(TYMS antibody) at dilution of 1:100 (under 40x lens)



Immunofluorescent analysis of HepG2 cells, using TYMS antibody Catalog No:116115 at 1:25 dilution and Rhodamine-labeled goat anti-rabbit



IgG (red).

+	-	-	Normal Rabbit IgG
-	+	-	TYMS Antibody

IP Result of anti-TYMS (IP:Catalog No:116115, 3ug; Detection:Catalog No:116115 1:600) with HeLa cells lysate 3200ug.