

# SEPT11 antibody



Catalog Number: 115115

## Product name

SEPT11 antibody

## Specificity

Human, Mouse, Rat; other species not tested.

## Antibody description

SEPT11 Rabbit Polyclonal antibody. Positive IHC detected in human ovary tissue, human kidney tissue, human lung tissue, human spleen tissue. Positive IF detected in HeLa cells, HepG2 cells. Positive IP detected in mouse brain tissue. Positive WB detected in human brain tissue, HeLa cells, HT-1080 cells, mouse brain tissue, mouse colon tissue, mouse small intestine tissue, SH-SY5Y cells. Observed molecular weight by Western-blot: 48 kDa

## Preparation

This antibody was obtained by immunization of SEPT11 recombinant protein (Accession Number: NM\_018243). Purification method: Antigen affinity purified.

## Formulation

PBS with 0.02% sodium azide and 50% glycerol pH 7.3.

## Storage

Store at -20°C. DO NOT ALIQUOT

## Clonality

Polyclonal

## Ig Type

Rabbit IgG

## Applications

ELISA, WB, IF, IP, IHC

## Dilutions

Recommended Dilution:

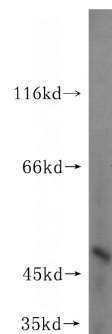
WB: 1:500-1:5000

IP: 1:200-1:2000

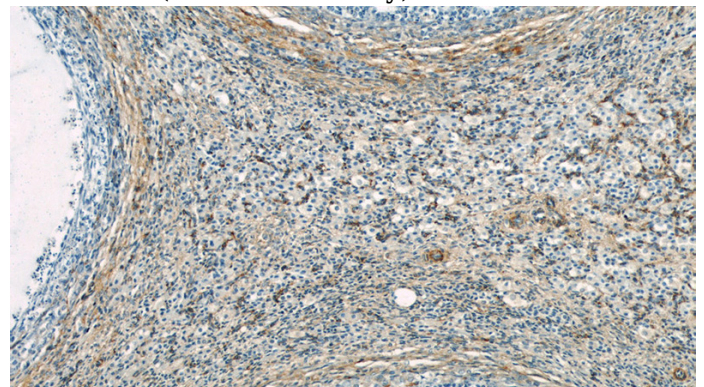
IHC: 1:20-1:200

IF: 1:20-1:200

## Validations



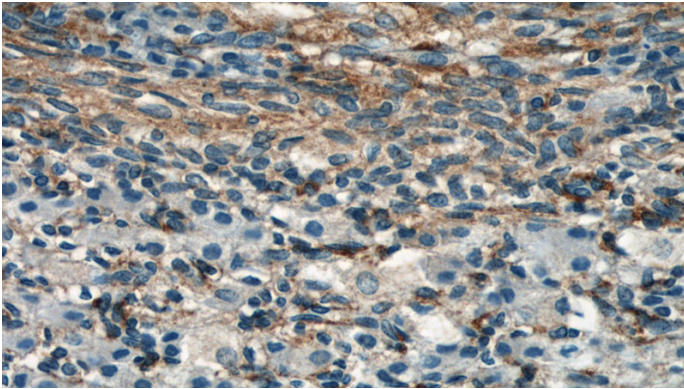
human brain tissue were subjected to SDS PAGE followed by western blot with Catalog No:115115(SEPT11 antibody) at dilution of 1:1000



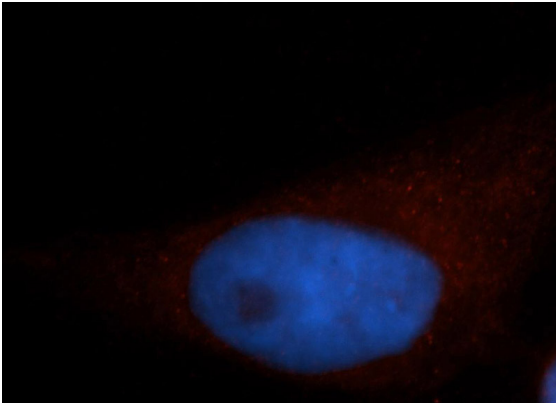
Immunohistochemical of paraffin-embedded human ovary using Catalog No:115115(SEPT11 antibody) at dilution of 1:50 (under 10x lens)

# SEPT11 antibody

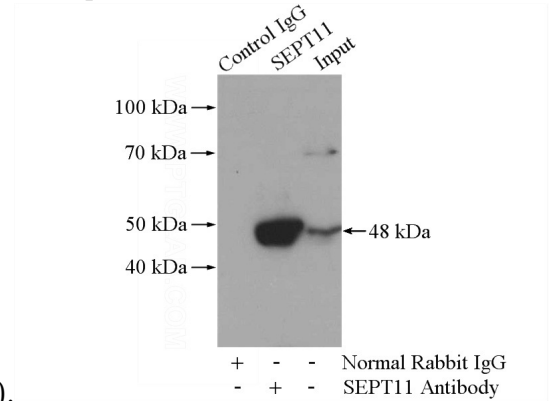
Catalog Number: 115115



Immunohistochemical of paraffin-embedded human ovary using Catalog No:115115(SEPT11 antibody) at dilution of 1:50 (under 40x lens)



Immunofluorescent analysis of HeLa cells, using SEPT11 antibody Catalog No:115115 at 1:50 dilution and Rhodamine-labeled goat anti-rabbit IgG (red). Blue pseudocolor = DAPI (fluorescent



DNA dye).

IP Result of anti-SEPT11 (IP:Catalog No:115115, 4ug; Detection:Catalog No:115115 1:500) with mouse brain tissue lysate 3440ug.