

Anti-IL19 antibody



Catalog Number: 175115

Product name

Anti-IL19 antibody

Specificity

Human

Antibody description

Rabbit polyclonal antibody to IL19

Preparation

This antigen of this antibody was peptide

Formulation

Liquid, 1*PBS (pH7.4), 0.2% BSA, 50% Glycerol.
Preservative: 0.05% Sodium Azide.

Storage

Store at +4°C after thawing. Aliquot store at -20°C or -80°C. Avoid repeated freeze / thaw cycles.

Clonality

Polyclonal

Ig Type

Rabbit IgG

Applications

ICC, IHC-P

Dilutions

ICC: 1:50-1:200

IHC-P: 1:50-1:100

Validations

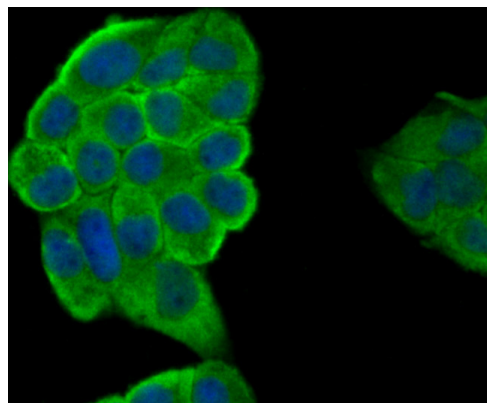


Fig1: ICC staining IL19 in HeLa cells (green). The nuclear counter stain is DAPI (blue). Cells were fixed in paraformaldehyde, permeabilised with 0.25% Triton X100/PBS.

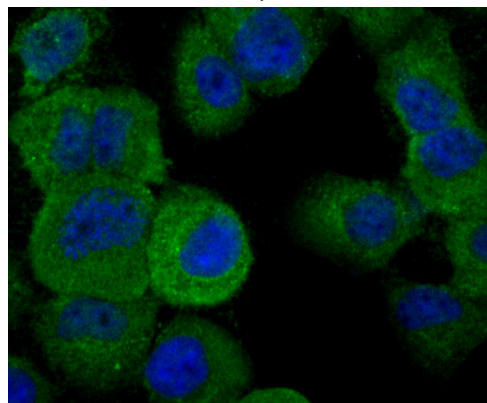


Fig2: ICC staining IL19 in HUVEC cells (green). The nuclear counter stain is DAPI (blue). Cells were fixed in paraformaldehyde, permeabilised with 0.25% Triton X100/PBS.

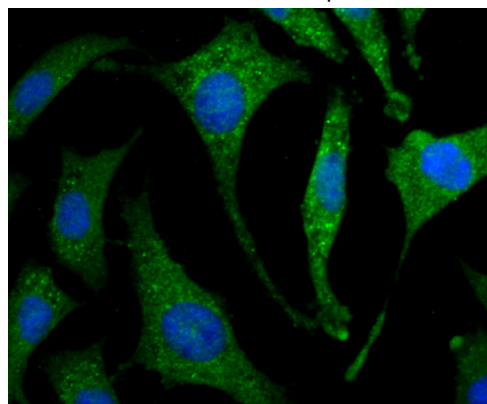


Fig3: ICC staining IL19 in SH-SY5Y cells (green). The nuclear counter stain is DAPI (blue). Cells were fixed in paraformaldehyde, permeabilised with 0.25% Triton X100/PBS.

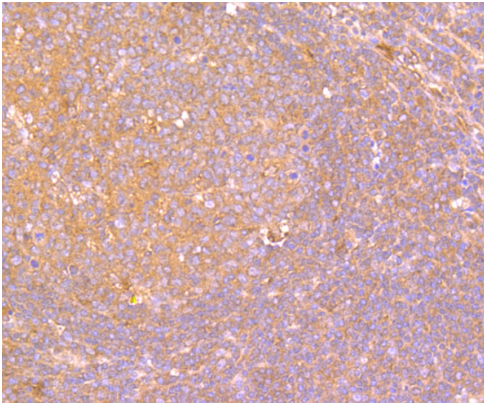


Fig4: Immunohistochemical analysis of paraffin-embedded human tonsil tissue using anti-IL19 antibody. Counter stained with hematoxylin.

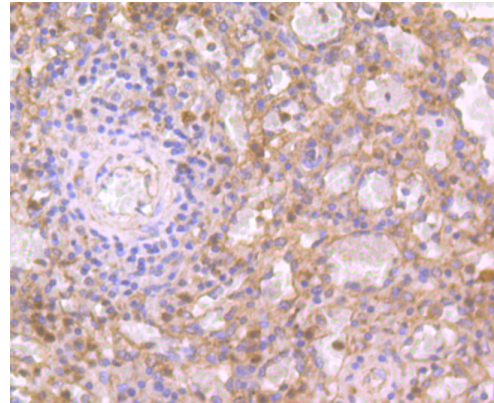


Fig5: Immunohistochemical analysis of paraffin-embedded human spleen tissue using anti-IL19 antibody. Counter stained with hematoxylin.