

Calbindin antibody

Catalog Number: 108815

Product name

Calbindin antibody

WB: 1:500-1:5000

IP: 1:500-1:5000

Specificity

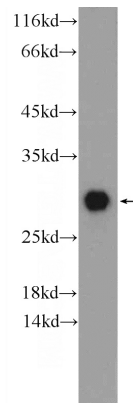
Human, Mouse, Rat; other species not tested.

IHC: 1:50-1:500

Antibody description

Calbindin Rabbit Polyclonal antibody. Positive IHC detected in human kidney tissue, human small intestine tissue. Positive IP detected in mouse brain tissue. Positive WB detected in mouse brain tissue, human brain tissue, human kidney tissue, rat brain tissue. Observed molecular weight by Western-blot: 29 kDa

Validations



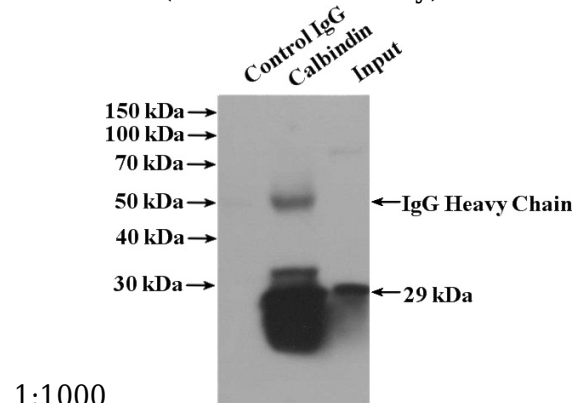
Preparation

This antibody was obtained by immunization of Calbindin recombinant protein (Accession Number: NM_004929). Purification method: Antigen affinity purified.

mouse brain tissue were subjected to SDS PAGE followed by western blot with Catalog No:108815(Calbindin Antibody) at dilution of

Formulation

PBS with 0.02% sodium azide and 50% glycerol pH 7.3.



Storage

Store at -20°C. DO NOT ALIQUOT

1:1000

Clonality

Polyclonal

IP Result of anti-Calbindin (IP:Catalog No:108815, 4ug; Detection:Catalog No:108815 1:1000) with mouse brain tissue lysate 4000ug.

Ig Type

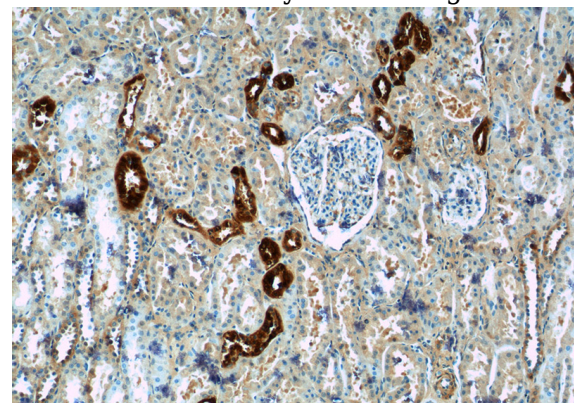
Rabbit IgG

Applications

ELISA, IP, IHC, WB

Dilutions

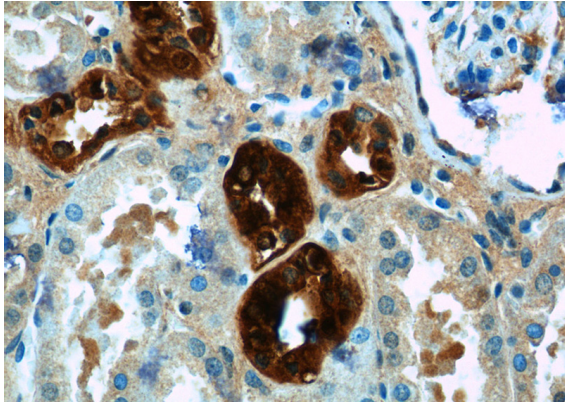
Recommended Dilution:



Calbindin antibody

Catalog Number: 108815

Immunohistochemistry of paraffin-embedded human kidney tissue slide using Catalog No:108815(Calbindin Antibody) at dilution of 1:50 (under 10x lens)



Immunohistochemistry of paraffin-embedded human kidney tissue slide using Catalog No:108815(Calbindin Antibody) at dilution of 1:50 (under 40x lens)